

Global Edge[®] 2011 – Automated Workflow

The Power to Succeed in a Global Market



The Next Great Leap in Manufacturing ...

Global Edge[®] is a Registered Trademark of Logic Design Corporation All Rights Reserved.

LOGIC DESIGN
corporation

Copyright © 2011 Logic Design Corporation – All Rights Reserved

161 West Wisconsin Avenue, Suite 2E • Pewaukee, WI 53072-3468
Phone: 262-695-1300 • Fax: 262-695-1313 • Web Site: www.ldcglobal.com

Global Edge® 2011 – Automated Workflow

The Power to Succeed in a Global Market

The Next Great Leap in Manufacturing ...

Global Edge® 2011 – Automated Workflow is an automated Engineering and Manufacturing Workflow System that provides manufacturing companies with **“The Next Great Leap in Manufacturing ...”**. **Global Edge** bridges the gap between engineering and manufacturing by integrating information between the two departments and automates many of the manual workflow tasks normally associated with the engineering and manufacturing workflow process.

Global Edge automates and significantly speeds up the time it normally takes to design, quote and configure custom products. **Global Edge** incorporates innovative software technology that helps reduce the cost of short-run products to that of mass produced products by reducing labor intensive design and engineering tasks from hours to minutes.



Global Edge® 2011 – Automated Workflow provides an affordable, **“Out-of-the-Box”** software solution that has been successfully implemented at manufacturing companies that range from small to Fortune 500 and includes the following capability:

- ➔ **Automated Quoting**
- ➔ **Automated Product Configuration**
- ➔ **Automated Routing Generation**
- ➔ **Advanced Bill of Materials Management**
- ➔ **Automated Engineering & Manufacturing Workflow**
- ➔ **CAD to ERP Integration**
- ➔ **Integrated Manufacturing / Shop Floor**
- ➔ **Integrated Financials**

“Smarter Software for Smarter Business”

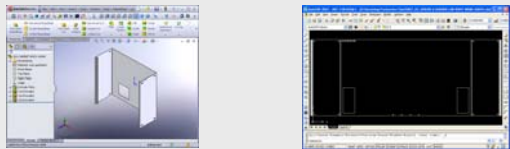
Global Edge® 2011 – Automated Workflow

The Power to Succeed in a Global Market

Automated Quoting

Global Edge® 2011 – Automated Workflow is the world's most advanced quoting system for the sheet metal fabrication industry. **Global Edge 2011** automates and significantly speeds up the time it normally takes to design, quote and configure custom products. In addition, **Global Edge 2011** automates the analysis of CAD drawings to determine the best and most cost effective routings to manufacture parts. **Global Edge 2011** incorporates innovative software technology that helps reduce the cost of short-run products to that of massed produced products by reducing labor intensive design and engineering tasks associated with the quoting process from hours to minutes.

Reduce Your Quoting Time from Hours to Minutes



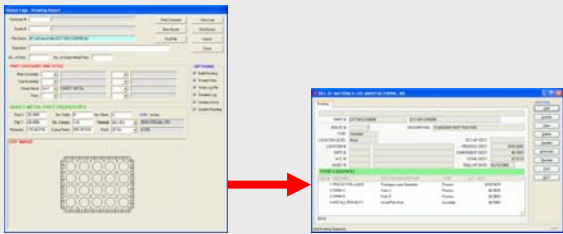
3D CAD Drawings

2D CAD Drawings

Automated CAD Drawing Analysis



Automated Machine Tool Selection



Automated Routing Generation

Produce More Accurate Sales Quotes, Faster



Automated Cost & Weight Roll-Ups

Automatically Generate Sales Quotes from Your CAD Drawings

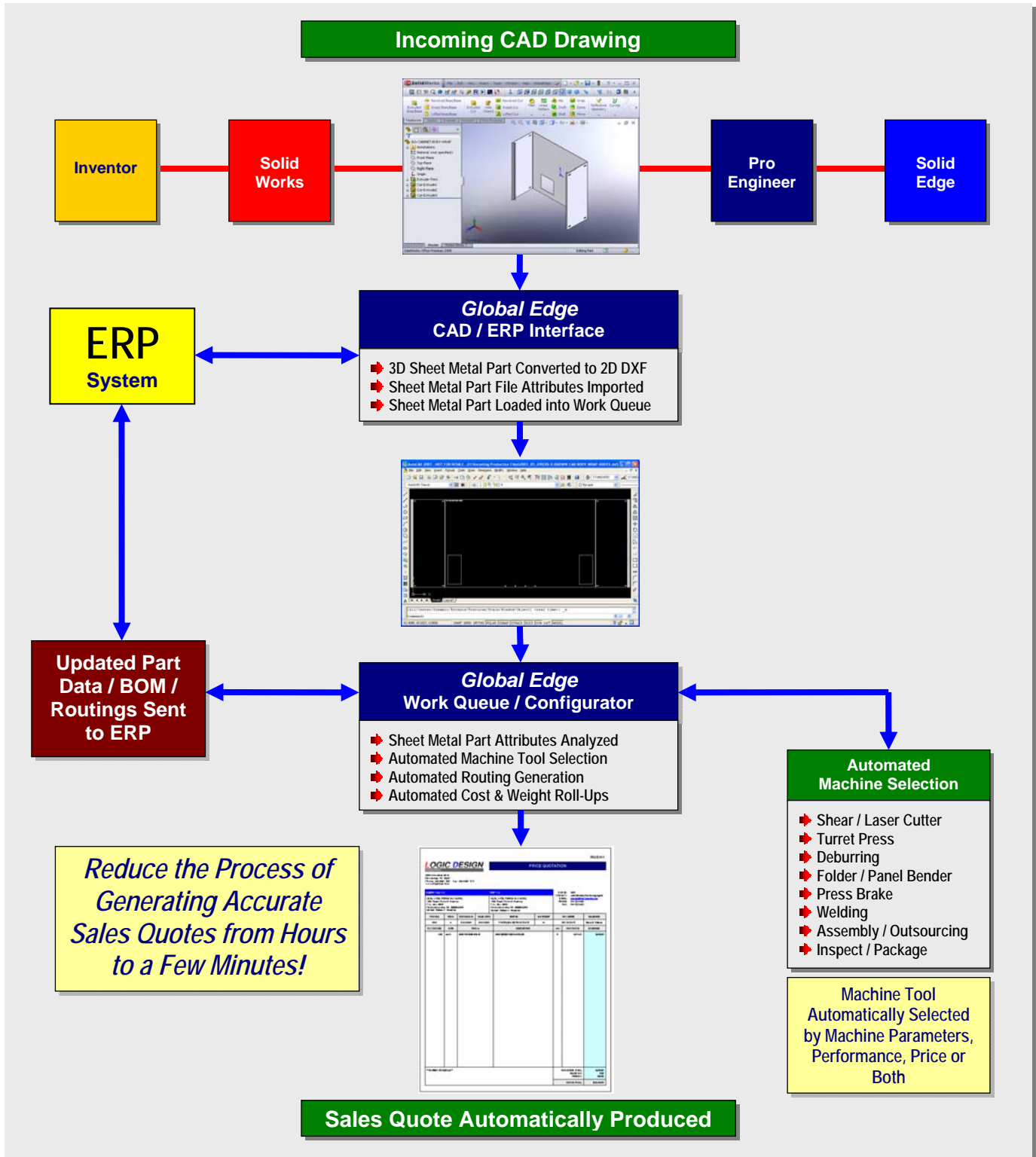
Key Features & Benefits

- ✓ Increase Your Sales Opportunities
- ✓ Increase Quoting Capacity with Better Cost Accuracy
- ✓ Automated Proposal Drawing Generation
- ✓ Simplifies & Automates Quoting Process
- ✓ Expanded Product Offerings at Lower Cost
- ✓ Provides Rapid Return On Investment

Global Edge® 2011 – Automated Workflow

The Power to Succeed in a Global Market

Automated Quoting Workflow Process



Global Edge® 2011 – Automated Workflow

The Power to Succeed in a Global Market

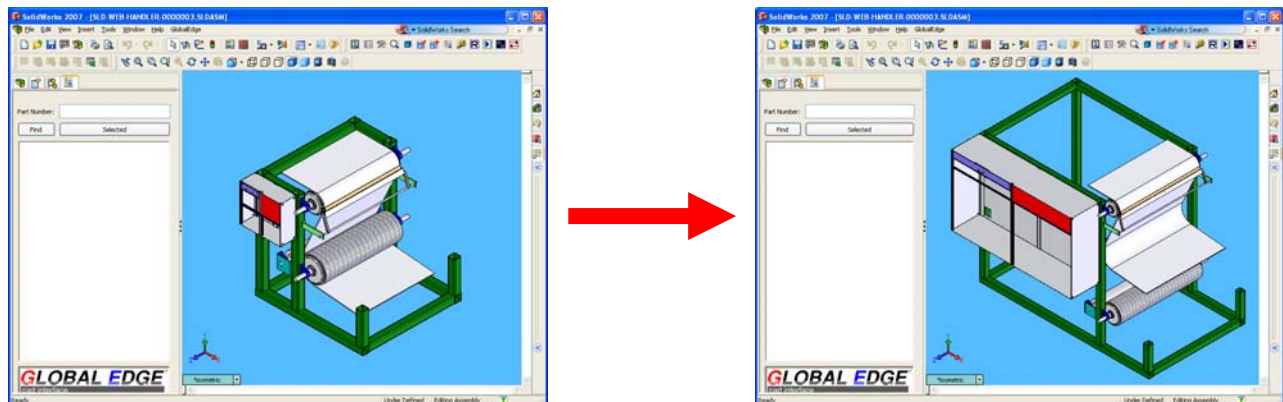
Automated Product Configuration

Global Edge® 2011 – Automated Workflow provides advanced functionality to automate the process of configuring simple-to-complex products and automatically producing both 2D and 3D CAD drawings associated with those configurations. **Global Edge** enables you to easily set-up Master Product Configurations based on engineering design rules, available product options, and automates the process of creating routings and NC programs to drive today's modern shop floor technology. **Global Edge** can integrate directly with your ERP / Business system to automatically create part numbers based on engineering and manufacturing rules.

Key Features & Benefits

- Automatic Configuration of Simple-to-Complex Products
- Automatic Generation of Bill of Materials & Routings with Cost & Weight Roll-Ups
- Automatic Generation of Engineering & Production Ready 2D / 3D CAD Drawings
- Automatic Generation of Complete Information to Drive Modern Shop Floor Automation
- Automatic Generation of 2D / 3D Customer CAD Drawings for Sales Quote

Simplify the Process of Providing Your Customer's with More Products Options



Reuse Rather than Re-Create – Quit Reinventing the Wheel!

“Without the Global Edge – Product Configurator, we would need to create hundreds of bill of materials (the list of damper components), which requires hundreds of engineering and clerical hours to create and maintain. Orders that once took up to four hours are now processed within 20 seconds.”

Steve Yoder, Damper Cell Manager
Johnson Controls – Watertown, Wisconsin

“Generate / Configure CAD Drawings & Routings in Minutes Versus Hours”

Global Edge® 2011 – Automated Workflow

The Power to Succeed in a Global Market

Automated Routing Generation

Global Edge® 2011 – Automated Workflow provides advanced functionality that automates the process of importing customer CAD drawings for the purpose of automated routing generation. **Global Edge** automatically analyzes the attributes within a CAD drawing and stores these attributes in the **Global Edge** database. The **Global Edge Product Configurator** then automatically generates routings in a matter of seconds based on the CAD attributes.

Key Features & Benefits

- ➔ Automatic CAD Drawing Analysis
- ➔ Automated Routing Generation
- ➔ Automatic Material Size Selection for Nestings
- ➔ Helps Maintain Consistent and Accurate Part Numbers

Eliminate the Manual Process of Determining How Parts are Manufactured

Global Edge - Drawing Import

Customer #: [] Find Customer View Log

Quote #: [] New Quote Find Quote

File Name: M:\dxf\import\test\EST-003-2160098.dxf Find File Import

Operator: [] Close

No. of Parts: [] No. of Sheet Metal Parts: []

PART CATEGORY AND STYLE

Main Assembly: []

Sub-Assembly: []

Sheet Metal: GH1 SHEET METAL

Part: []

OPTIONS

Build Routing

Prompt Data

Write Log File

Detailed Log

Update Active

Update Pending

SHEET METAL PART PROPERTIES

Part #: 36.0856 No. Folds: 0 No. Hems: 0 UOM: inches

Part Y: 20.0856 No. Outcuts: 124 Material: NS-CRS [] (NON-SPECIAL CRS)

Parameter: 125.963790 Outcut Parts: 595.907029 Thick: 20 GA. [] (0.036)

DXF IMAGE



Routing

PART #: EST-003-2160098 EST-003-2160098

ROUTE #: 1 DESCRIPTION: STANDARD PART ROUTING

TYPE: Standard

LOCATION LEVEL: None

DEPT #: [] SET UP COST: \$163.4205

W/C #: [] PROCESS COST: \$6.7643

ASSET #: [] TOTAL COST: \$170.19

ROLL-UP DATE: 02/16/2009

FOUND 4 SEQUENCES

SEQ #	ROUTING	ROUTING DESCRIPTION	TYPE	EST. COST
1	PROTOTYPE-LASER	Prototype Laser Operation	Process	\$160.9479
2	FORM-3	Form 3	Process	\$0.9628
3	FORM-5	Form 5	Process	\$0.9843
4	INSTALL-PEN-NUTS	Install Penn Nuts	Assembly	\$0.5904

#010

Add Routing Sequence

ROUTING

Buttons: Add, Update, View, Delete, Header, Alternate, Recorder, Test, Quit

Cycle Time is Shrinking – My Customer Wants Everything “Yesterday!”

“Within one year of implementing Global Edge the time from order entry to shipment of custom power supplies decreased from four months to three weeks.”

John Garcia, V.P. Engineering
Lambda Electronics, Inc. – Melville, New York

Import Customer CAD Drawings & Generate Accurate Routings

Global Edge® 2011 – Automated Workflow

The Power to Succeed in a Global Market

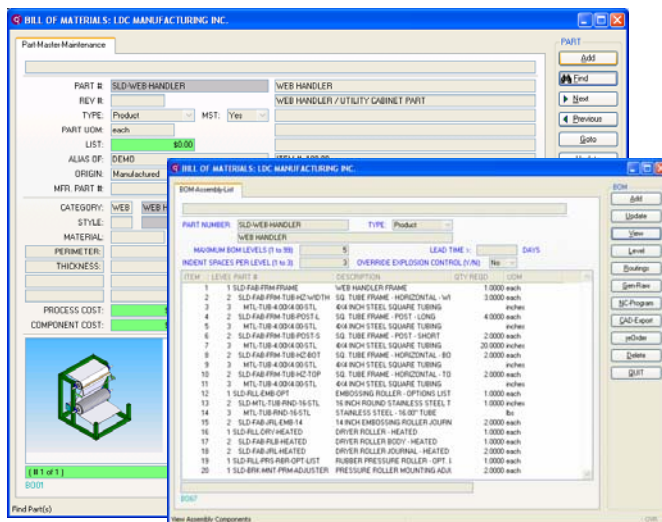
Advanced Bill of Materials Management

Global Edge® 2011 – Automated Workflow provides advanced bill of materials functionality designed to manage parts, assemblies, products and routings from initial design to final product shipment. Driven by a powerful product configuration engine, **Global Edge** automates the task of creating simple-to-complex, multi-level product assemblies including routings and cost roll-ups. With a direct interface to most major 3D CAD and ERP systems, **Global Edge** produces an accurate bill of materials that is stored in a "real-time" engineering data warehouse to which sales, purchasing, manufacturing and accounting have easy access.

Key Features & Benefits

- ➔ Reduce Engineering Design Cycle Times / Increase Design Reuse
- ➔ Automate Configuration of Simple-to-Complex Products
- ➔ Generate Accurate Bill of Materials / Routings
- ➔ Easily Find Existing Parts & Documents with Advanced BOM Search Functionality
- ➔ Eliminate Duplicate Part Numbers / Orphan Parts
- ➔ Centralize & Consolidate Multiple Bill of Materials Databases

Simplify the Process of Managing the Life Blood of Your Business



- Bill of Materials Management
- Powerful "Where-Used"
- Direct Interface to CAD / ERP
- Automated Product Configuration
- Automated BOM / Routing Generation
- Automated Cost Roll-Ups
- Automated Drawing Generation
- Automated Link to Production
- Electronic Cut Lists
- Integrated Document Control
- Enterprise Integration

Find the Right Information When You Need It!

"Global Edge has reduced the time spent entering data and searching for information resulting in 50% more design time available."

Jeff Duxbury, Project Engineer
Nelson Industries – Black River Falls, Wisconsin

Synchronize Your CAD BOM with Your Manufacturing BOM

Global Edge® 2011 – Automated Workflow

The Power to Succeed in a Global Market

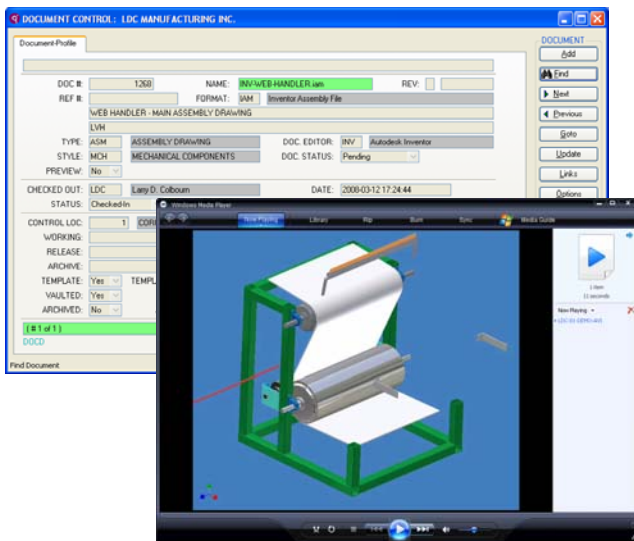
Integrated Document Management

Global Edge® 2011 – Automated Workflow provides integrated document management system that makes it easy to securely vault and retrieve documents enterprise-wide. **Global Edge** eliminates document search time and duplicated documents by securely vaulting documents as they are checked in. **Global Edge** incorporates drag and drop document vaulting that enables you to grab a document from your desktop and securely vault it with the point and click of a mouse. **Global Edge** provides a secure document vault that ensures documents are securely and accurately stored for authorized retrieval. **Global Edge** links and vaults documents attached to an actual bill of materials structure. This structure provides for virtually unlimited searching capabilities such as by: drawing, customer, vendor, project, job, ECO, work order, etc.

Key Features & Benefits

- Provides Documents When & Where Needed
- Integrates Documents with Bill of Materials
- Provides Advanced Document Search Capabilities
- Automated Revision Control & Approval
- Helps Effectively Manage & Control Documents Throughout Enterprise

Retrieve Documents Based on Advanced Bill of Materials Searches



- Documents Where Needed in Workflow Process
- Documents Linked to Multiple Data Sources:
 - Parts / Assemblies
 - Routings / Processes
 - Engineering Workflow
 - Shop Floor Workflow
 - Shop Floor Equipment
- Advanced Document Searching
- Document "Where-Used"
- Document Check-In / Check-Out
- Documents Linked to Bill of Materials
- Automated Rev. Control & Approval
- Document Links Throughout ERP
- Document Access & Security Control

Effectively Control Bill of Materials & Documents!

"Logic Design Corporation is an excellent example of Total Quality Management; They have proven to me time and time again that customer satisfaction is their number one objective."

M.J. Fox, Document Control Manager
Aztek Engineering Incorporated – Boulder, Colorado

Provides Documents When & Where Needed in Workflow Process

Global Edge® 2011 – Automated Workflow

The Power to Succeed in a Global Market

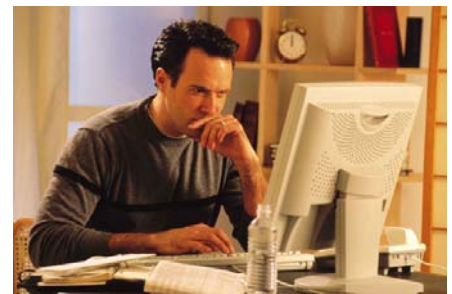
Automated Engineering Workflow

Global Edge® 2011 – Automated Workflow includes a full functioned engineering product data management workflow system designed to improve the efficiency and productivity of an engineering department. **Global Edge** helps forge a strong partnership between engineering, manufacturing, sales, purchasing and accounting to provide accurate, real-time information for every project and job in production.

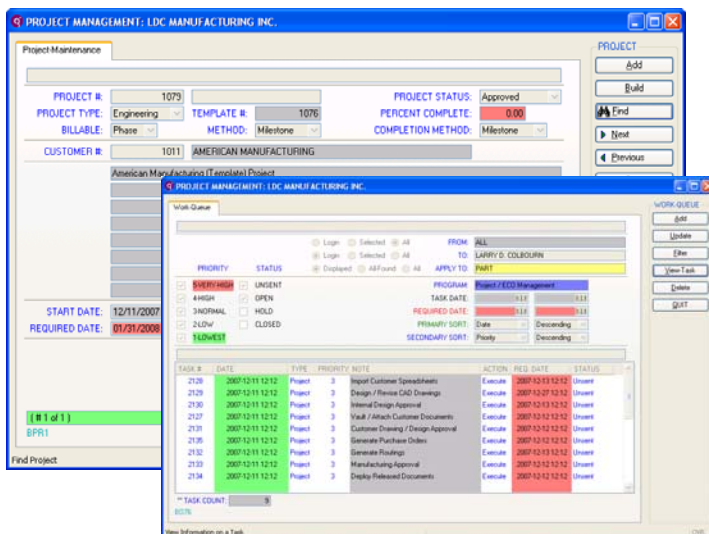
Global Edge eliminates retyping the same information from department to department to help maintain accuracy and eliminate duplication of effort. **Global Edge** speeds time-to-market by providing the right information to right people when they need it. **Global Edge** includes a full functioned project / engineering change order management system that makes it easy to track project time, revision and engineering changes. **Global Edge** includes full functioned project accounting and professional billing for services rendered.

Key Features & Benefits

- ➔ Reduce Engineering Cycle Times
- ➔ Provide Better Customer Service
- ➔ Streamline Project / ECO Workflow Process
- ➔ Establish On-Line Engineering Knowledge Database
- ➔ Better Planning / Allocation of Project Resources
- ➔ Speed-Up Design & ECO Approval Process
- ➔ Accurate Version & Release Control
- ➔ Accurate Tracking of Project Time & Expenses



Easy Retrieval of Past Project Histories



- Engineering Data Warehouse
- Engineering / PDM Workflow
- Design & Document Approval
- Version & Release Control
- Project / ECO Management
- Errata Problem Reporting
- Professional Billing / Project Accounting
- Time & Attendance
- Customer Service / Technical Support:
 - Service Orders
 - Warranty Support
 - Product Tracking
- Enterprise Integration

Automate & Easily Prioritize Your Project Workflow Tasks

Global Edge® 2011 – Automated Workflow

The Power to Succeed in a Global Market

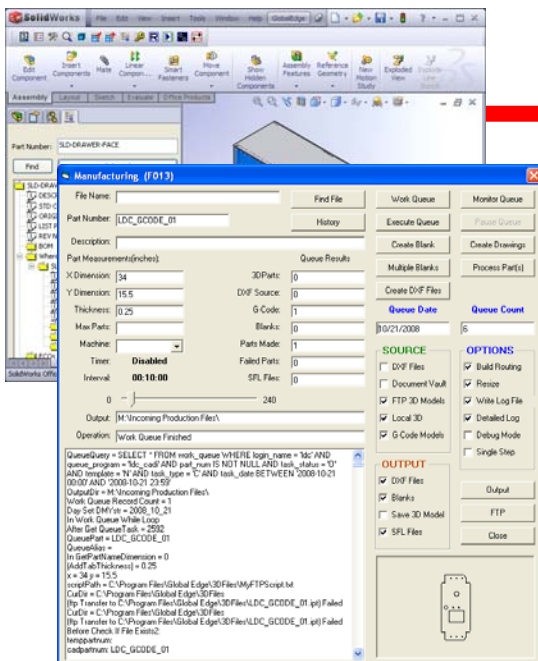
Automated Manufacturing Workflow

Global Edge® 2011 – Automated Workflow integrates directly with your ERP / Business system to eliminate the manual processing of Production / Work Orders. This includes the automated processing of 3D and 2D CAD drawing information made ready for automated nesting of parts, assemblies, and kits for automated laser cutting and folding of sheet metal components. Information processed can be sorted according to your scheduling / nesting requirements. This module can process daily order information from your ERP / Business system by integrating it with engineering and CAD to automatically process information ready for shop floor automation. **Global Edge** integrates work orders directly with CAD to process parts that need to be produced. This process includes determining if an existing CAD drawing exists in the engineering library. If so, **Global Edge** can add necessary information to the part such as: engraved part numbers, cross hairs, and include sacrificial folding tabs required for sheet metal bending machines. **Global Edge** can also process existing NC G-Code programs by automatically converting them into 3D and 2D CAD drawings that are ready for nesting software and the laser cutter.

Key Features & Benefits

- ➔ Significantly Reduce Manufacturing Overhead Costs
- ➔ Eliminates / Reduces Engineering Clerical Work (Non-Value Added Time)
- ➔ Automatic Generation of 2D / 3D CAD Drawings Based on Daily Production Runs
- ➔ Automatic Embedding of DXF Files with Manufacturing Parameters

Automatically Produces Shop Floor Ready Production Data



- Automatic Synchronization of CAD BOM / Routings with ERP
- Automatic Collection of Part Parameters / Dimensions
- Automatic 3D CAD Drawing / G-Code Generation
- Automatic Part Resizing to Fit Production Machinery
- Automatic Embedding of DXF Files w/ Manufacturing Parameters
- Automatic Assembly Production Kitting

Shop Floor Ready
Production Data

Automate Labor Intensive Manufacturing Engineering Processes

Global Edge® 2011 – Automated Workflow

The Power to Succeed in a Global Market

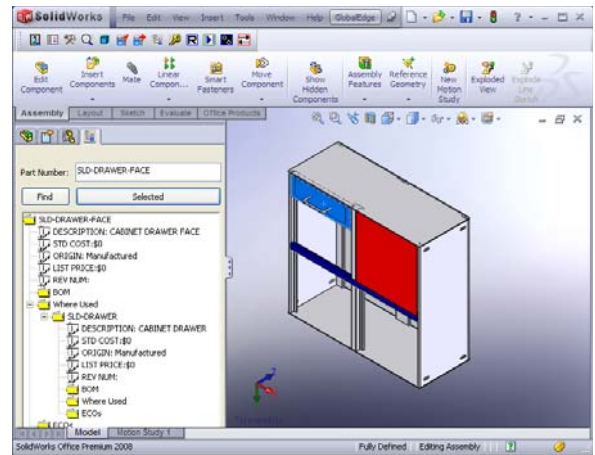
CAD Interface

Global Edge® 2011 – Automated Workflow software optionally includes a CAD Interface that provides a dynamic, two-way Bill of Materials link between 3D CAD systems and most ERP / Accounting systems. As new products are designed, or existing products are modified, **Global Edge** provides an automated real-time link to synchronize product bill of materials information between CAD drawings and your business system. **Global Edge** eliminates the manual retyping of bill of materials and routing information into the ERP system. As new parts and assemblies are created or modified in engineering, this information is dynamically updated and is made readily available at the enterprise level.

Global Edge® 2011 – CAD Interface software runs inside of most popular CAD systems to automatically update CAD attribute information from each part and assembly drawing in the **Global Edge** database. By synchronizing and providing a dynamic link to part numbers in your business system, the **Global Edge** software makes it easy to manage your bill of materials for new and existing products.

Global Edge® 2011 – CAD Interface

- ➔ **Automatic CAD Drawing Vaulting**
 - Automatic Document Import / Vaulting
 - Document Check-In / Check-Out
- ➔ **CAD / BOM Update Screen**
 - Automated Update of ERP BOM with CAD BOM
 - CAD Part Dimension Look-Up / Edit
- ➔ **Model Explorer**
 - Assembly Part, Document, Dimension Tree Edit / Display
 - Part Number Generation / Edit
 - Part Dimension Generation / Edit
 - Part Number Document Link
- ➔ **Assembly Browser / Part Look-Up**
 - Assembly Database Look-Up
 - Part Look-Up / Document Vault Launch
- ➔ **Document Revision**
 - Automatic Document Revision / Vaulting
 - Document Revision History
- ➔ **Document Generation & Deployment**
 - Automatic Generation of PDF Documents
 - Automatic Document Deployment Where Needed
- ➔ **Drawing Rebuild**
 - Automated Configuration of CAD Drawings with Configuration Parameters
- ➔ **Production Work Queue**
 - Automated Shop Drawing Processing / Configuration Based on Daily Production Runs
 - Automatic Sheet Metal Part Unfolding (organized by gauge, kits, material, etc.)
 - Automatically Creates and Distributes DXF Files When and Where Needed
 - Distributes CAD Drawings to Directories Needed by Nesting Software



CAD Interface Advantages

- ✓ Automatically Synchronizes CAD BOM with ERP BOM to Ensure Information Accuracy
- ✓ Eliminates Manual Retyping of Engineering Information into ERP System
- ✓ Increases Engineering Capacity Through Task Automation
- ✓ Automatically Prepares Information for Shop Floor without Human Intervention
- ✓ Automatically Generates CAD Drawings and Routings Based on Daily Production Runs
- ✓ Helps Ensure Effective Control and Management of Documents

Bi-Directional Integration of CAD / ERP / Shop Floor Automation

Global Edge® 2011 – Automated Workflow

The Power to Succeed in a Global Market

Integrated Manufacturing / Shop Floor

Global Edge® 2011 – Automated Workflow includes a full functioned Shop Floor Control / Manufacturing Execution System. **Global Edge** forges a strong partnership between engineering, purchasing and manufacturing to head off design and manufacturing problems to control costs. Material requirements planning, process planning, procurement, scheduling, material and labor costs, production tracking and quality control issues are all made more manageable with **Global Edge**. Automatic feedback of problem reporting to engineering constitutes a system that supports the requirements for ISO 900x certification.

Global Edge automatically integrates the engineering bill of materials and routings with work orders to help streamline the manufacturing workflow process. Bar coding provides real-time information for every job in production. **Global Edge** provides real-time, accurate job costing that breaks down each project and job by labor and machine time, as well as material and outside vendor process costs.

Key Features & Benefits

- ➔ **Machine Data Provided When & Where Needed**
- ➔ **Automated Shop Floor Document Deployment**
- ➔ **Automated Job / Work Order Build**
- ➔ **Real-Time Shop Floor Monitoring / Part Tracking**
- ➔ **Real-Time Shop Floor Data Collection**

Automatically Produces Shop Floor Ready Production Data

The screenshot displays two overlapping software windows. The top window, titled 'JOB MAINTENANCE: LDC MANUFACTURING, INC.', contains fields for Job # (1001), SBC-1007, Job Date (01/21/2000), Schedule Date (01/18/2000), Job Type (Order), Job Priority (Lowest), Completion Method (Count), Job Cost Type (Standard), Customer # (1007), and Purc. Order # (SBC-012100). The bottom window, titled 'DATA COLLECTION: LDC MANUFACTURING, INC.', shows a 'Shop-Floor Data Collection' form with fields for Location # (1), Dept # (1), W/C #, and a table for data entry with columns for TRANS #, TRANSACTION, JOB #, REFERENCE, PACK #, LIST #, APPR, and POST.



- **Job / Work Order Management**
- **Critical Path Ordering**
- **Materials Requirements Planning**
- **Scheduling / Capacity Planning**
- **ASRS / Materials Handling Control**
- **Real-Time On-Line Job Status**
- **Shop Floor Travelers**
- **Production Reporting / Job Costing**
- **Inspection & Quality Reporting**
- **Lot & Serial Tracking & Traceability**
- **Bar Coding & Scanning**
- **Machine & Tool Management**
- **Paperless Manufacturing**

Provides “Real-Time” Data Flow To & From the Shop Floor

Global Edge® 2011 – Automated Workflow

The Power to Succeed in a Global Market

Configurable ERP Interface

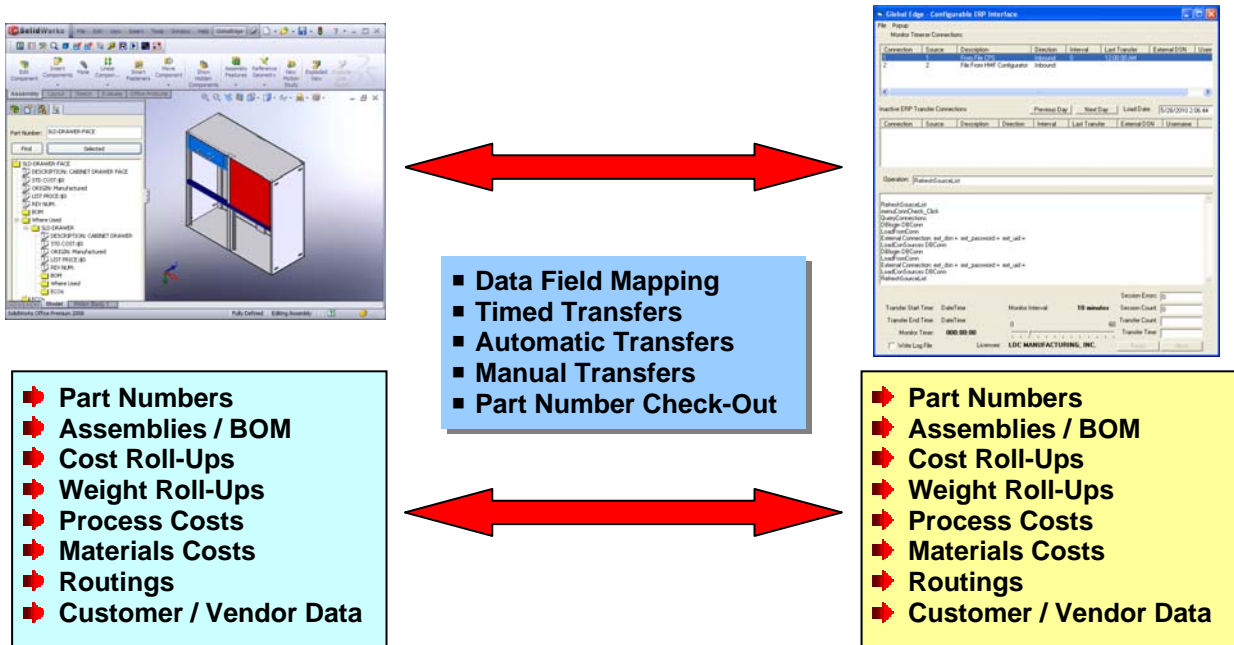
Global Edge® 2011 – Automated Workflow provides a direct two-way, real-time information link between your CAD drawings and your ERP / Business System. This interface automatically synchronizes the bill of materials within the CAD drawing with the bill of materials stored in your ERP / Business system. As components are added, removed or modified in your CAD drawings, the bill of materials in your ERP / Business system is automatically updated. **Global Edge** allows you to maintain an engineering bill of materials in your CAD drawing that is synchronized with the manufacturing bill of materials contained in your ERP / Business system. **Global Edge** integrates directly with machines on the shop floor to collect production information to provide your ERP / Business System with “Real-Time” production data.

Global Edge eliminates the manual retyping of the bill of materials and routing information into your ERP / Business system. Existing parts are easily found and reused instead of creating massive and expensive duplication of data and effort. As new parts and assemblies are created or modified in engineering, this information is dynamically updated and is made readily available at the enterprise level. Any customized changes are automatically updated in the assembly with the material and process costs re-rolled up and automatically updated back to ERP. **Global Edge** improves information accuracy throughout the enterprise and eliminates retyping information from CAD back to ERP or vice versa.

Key Features & Benefits

- **Automatically Synchronizes CAD Bill of Materials with ERP Bill of Materials**
- **Eliminates Manual Retyping of Engineering Information into ERP System**
- **Significantly Reduces Engineering Clerical Work & Improves Information Accuracy**
- **Provides Accurate “Real-Time” Information To and From Shop Floor**

Automatically Synchronizes CAD Drawings with ERP



Bi-Directional Integration of CAD / ERP / Shop Floor Automation

Global Edge® 2011 – Automated Workflow

The Power to Succeed in a Global Market

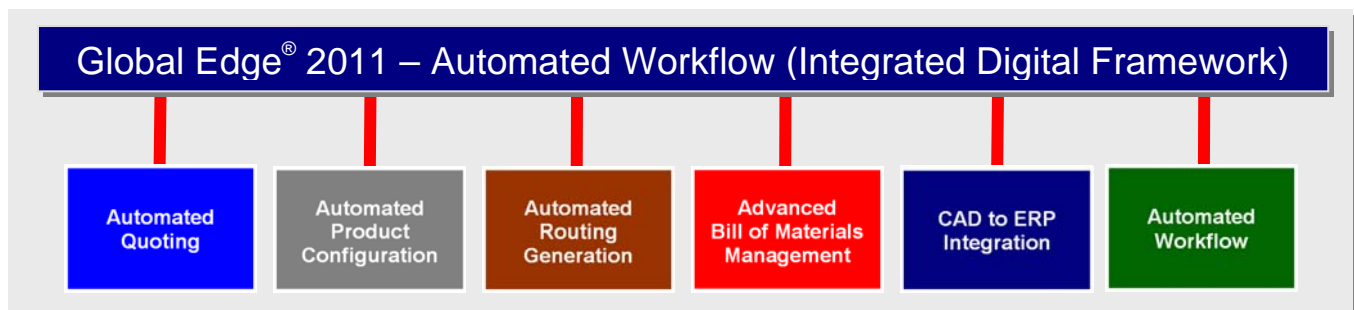
Fully-Integrated ERP

Global Edge® 2011 – Automated Workflow provides a fully integrated accounting system to manage the financial portion of your business. **Global Edge** integrates all aspects of the enterprise with your finance department from sales, to engineering, to purchasing and manufacturing. **Global Edge** focuses on keeping data entry requirements to a minimum by providing a single point of data entry. Once information is entered into system, it can be moved electronically throughout the enterprise without double keying of data. **Global Edge** provides real-time consolidated Financial Reporting.

Fully-Integrated Software Modules

- Sales & Quote Management
- Engineering Management
- Integrated Manufacturing
- Order Entry / Billing / Accounts Receivable
- Accounts Payable / Purchase Order
- Inventory Control / Shipping & Receiving
- General Ledger / Bank Account
- Fixed Assets Management
- Payroll Time & Attendance

Real-Time Financial Integration with Sales, Engineering & Manufacturing



Integrate Multiple Technologies to Maximize Shop Floor Production

Effectively Manage Your Enterprise!

"Global Edge has effectively introduced and updated a total program for Carron Net Company. Starting with the custom product Configurator and working through inventory, order entry, the general ledger and accounting, Global Edge has integrated a complete system. We have found the system easy to use and navigate, yet complex enough to handle our needs."

Troy Christiansen, Vice President
Carron Net Company – Two Rivers, Wisconsin

Effectively Manage Your Enterprise from Sales to Final Product Shipment

Global Edge® 2011 – Automated Workflow

The Power to Succeed in a Global Market

Logic Design Corporation

Founded in 1983, Logic Design Corporation is a Software Development and Technology Integration Company that specializes in innovative, leading edge software solutions that help Engineer-To-Order manufacturing companies transform engineering and manufacturing to design and build products better, faster and cheaper. LDC helps your company stay ahead of the competition with proven products and services that are practical to implement and deliver a Rapid, Significant Return On Investment. LDC enables manufacturing companies to achieve high levels of engineering and manufacturing productivity and help attain an "INTEGRATED DIGITAL FACTORY" environment with products and services that include:

- ▶ **Global Edge® 2011 – Automated Workflow**
- ▶ **INTEGRATED DIGITAL FACTORY**
- ▶ **2D / 3D CAD Programming**
- ▶ **Shop Floor Integration / Automation Planning**
- ▶ **Technology Integration Programming**



Johnson Controls, Cooper Power Systems, Siemens, and Lambda Electronics are some of the many companies that have benefited from the products and services of Logic Design Corporation. Benefits provided have included significantly reducing engineering and manufacturing cycle times by automating many of the manual time consuming workflow tasks that range from product configuration to drawing generation, to providing the shop floor with complete information when and where needed. For more information on how the products and services of Logic Design Corporation can help your company achieve significant productivity gains, faster delivery times, improved product quality, and reduced costs.

Please visit www.ldcglobal.com or contact Logic Design Corporation to schedule a demonstration of the **Global Edge® 2011 – Automated Workflow**.

161 West Wisconsin Avenue
Suite 2E
Pewaukee, WI 53072-3468
Phone: 262-695-1300
Fax: 262-695-1313
E-Mail: info@ldcglobal.com

www.ldcglobal.com

Mission Statement

"Our Goal is to provide manufacturers with innovative, cost-effective solutions for reducing costs, improving productivity and streamlining operations to achieve a competitive global edge."