

Global Edge[®] 11.0 – Productivity Suite

The Power to Succeed in a Global Market

The Next Great Leap in Manufacturing ...



*Stay Ahead of Your Competition
with Leading Edge Technology*

Global Edge[®] is a Registered Trademark of Logic Design Corporation.

Copyright © 2008 Logic Design Corporation – All Rights Reserved – Version 11.0.01

LOGIC DESIGN
corporation

161 West Wisconsin Avenue, Suite 2E • Pewaukee, WI 53072-3468
Phone: 262-695-1300 • Fax: 262-695-1313 • Web Site: www.lcdglobal.com

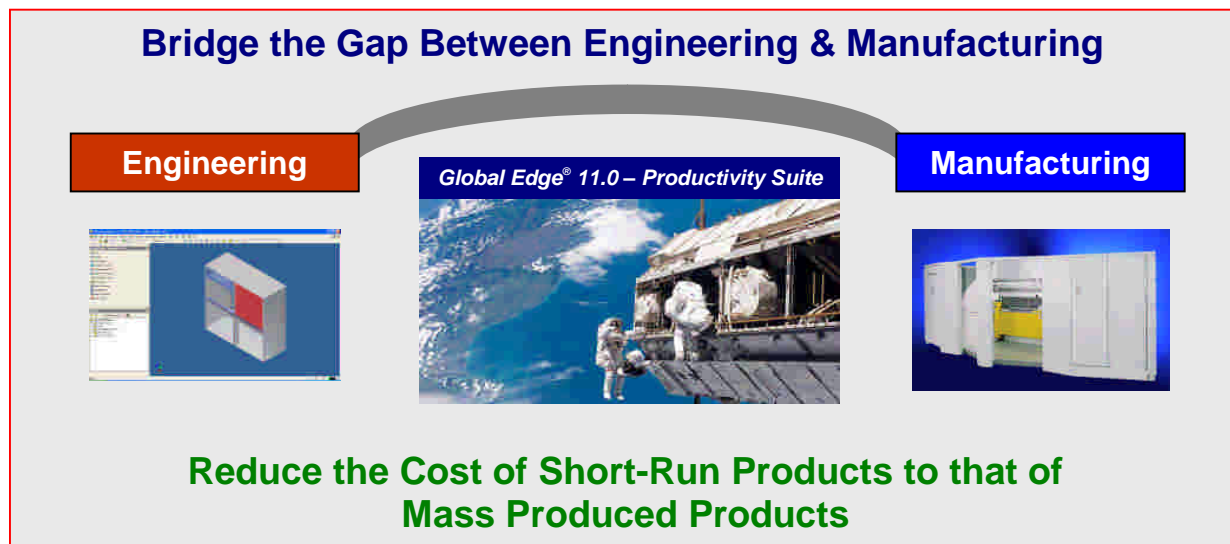
Global Edge® 11.0 – Productivity Suite

The Power to Succeed in a Global Market

The Next Great Leap in Manufacturing ...

Logic Design Corporation introduces the **Global Edge® 11.0 – Productivity Suite**, an automated Engineering and Manufacturing Workflow System that provides manufacturing companies with “**The Next Great Leap in Manufacturing**”. **Global Edge** bridges the gap between engineering and manufacturing by integrating information between the two departments and automates many of the manual workflow tasks normally associated with the engineering and manufacturing workflow process.

Global Edge automates and significantly speeds up the time it normally takes to design, quote and configure custom products and eliminates the manual programming of modern shop floor equipment such as robotic sheet metal folding machines. **Global Edge** incorporates innovative software technology that helps reduce the cost of short-run products to that of mass produced products by reducing labor intensive design and engineering tasks from hours to seconds.



The **Global Edge® 11.0 – Productivity Suite** provides an integrated digital factory environment with an “**Out-of-the-Box**” software solution at an affordable price. The **Global Edge® 11.0 – Productivity Suite** software has been successfully implemented at manufacturing companies that range from small to Fortune 500 and includes the following functionality:

- ▶ **Automated Sales Quote Generation**
- ▶ **Automated Product Configuration / Drawing Generation**
- ▶ **Manufacturability Testing**
- ▶ **Standard Folding Language™**
- ▶ **Automated Production Work Queue**
- ▶ **CAD to ERP Integration**

Global Edge[®] 11.0 – Productivity Suite

The Power to Succeed in a Global Market

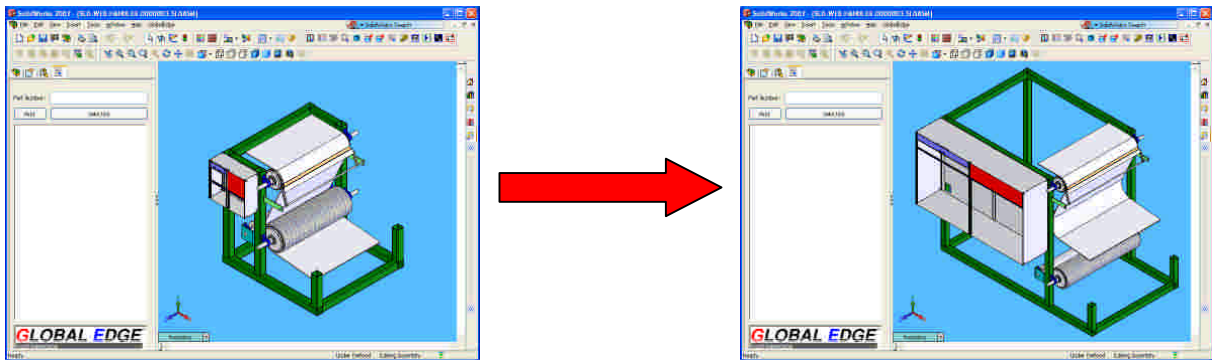
Automated Product Configuration / Drawing Generation

The **Global Edge[®] 11.0 – Productivity Suite** provides advanced functionality to automatically configure simple-to-complex products and automatically generate configured 3D CAD drawings. The **Global Edge Product Configurator** provides an innovative method to configure products based on “**Soft Coded**” product configuration rules that eliminates the need to program software. Whether it is configuring products directly from sales quotes or from a customer web site, **Global Edge** makes it a simple process with a “**Plug & Play**” configuration approach that makes it possible incrementally add configuration rules to your existing CAD drawings.

Global Edge eliminates the need to plan and program every product combination from the top down and allows engineers to selectively configure parts in an assembly and incrementally build more and more rules into your products over time.

Key Features & Benefits

- Provides an Effective Tool to Design and Configure Products in a Matter of Seconds
- Automatic Configuration of Simple-to-Complex Products
- Automatic Generation of Sales, Engineering and Production ready 2D / 3D CAD Drawings
- Automatic Generation of BOM and Routings including Material, Labor, and Weight Cost Roll-Ups
- Automatic Generation of Complete Information to Drive Modern Shop Floor Equipment
- Allows Manufacturers the Ability to Offer More Product Options to their Customers
- Automatically Generates 3D CAD Drawings from Sales Quotes, Web Sites and Daily Production Orders



Global Edge automatically produces 3D CAD drawings in seconds based on the output produced by the Product Configurator

Johnson Controls: “Orders that once took 4 hours to process are now processed within 20 seconds using the Global Edge – Product Configurator.”

Reuse rather than re-create – quit reinventing the wheel!

“Without the Global Edge – Product Configurator, we would need to create hundreds of bill of materials (the list of damper components), which requires hundreds of engineering and clerical hours to create and maintain. Orders that once took up to four hours are now processed within 20 seconds.” – Steve Yoder, Damper Cell Manager, Johnson Controls

Global Edge® 11.0 – Productivity Suite

The Power to Succeed in a Global Market

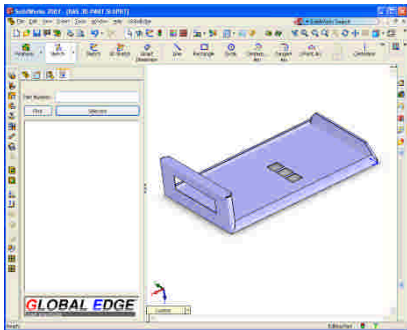
Manufacturability Testing

The **Global Edge® 11.0 – Productivity Suite** provides advanced functionality that allows an engineer to design a part and perform an analysis at the design stage to determine if a sheet metal part can be manufactured on a laser cutter, robotic folding machine, brake press or robotic welding machine. The **Global Edge** software performs a complete analysis on the part and compares it with the parameters of shop floor machine to determine if the machine can manufacture the part. This innovative functionality can save significant time and money by testing if a part can be manufactured before it gets to the shop floor.

Key Features & Benefits

- Test Part in Engineering to Determine if New Part Can Be Manufactured Before it Reaches the Shop Floor
- Helps Determine Machine Best Suited to Manufacture Part
- Helps Avoid Costly Manufacturing Errors

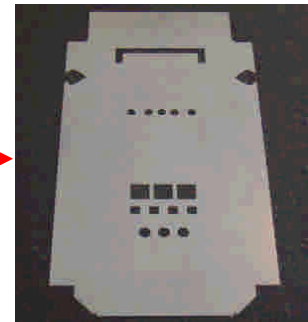
Before Designs Leave Engineering ...



The **Global Edge** software compares the 3D CAD Model with the capabilities of the Folding Machine to insure the part can be successfully folded on the folding machine.



The **Global Edge** software checks if the flat pattern fits the sizes of your raw material sheet metal stock (internal stock sizes or vendor outsourced sizes).



... Make Sure Your Shop Floor Equipment Can Manufacture the Part!

Global Edge[®] 11.0 – Productivity Suite

The Power to Succeed in a Global Market

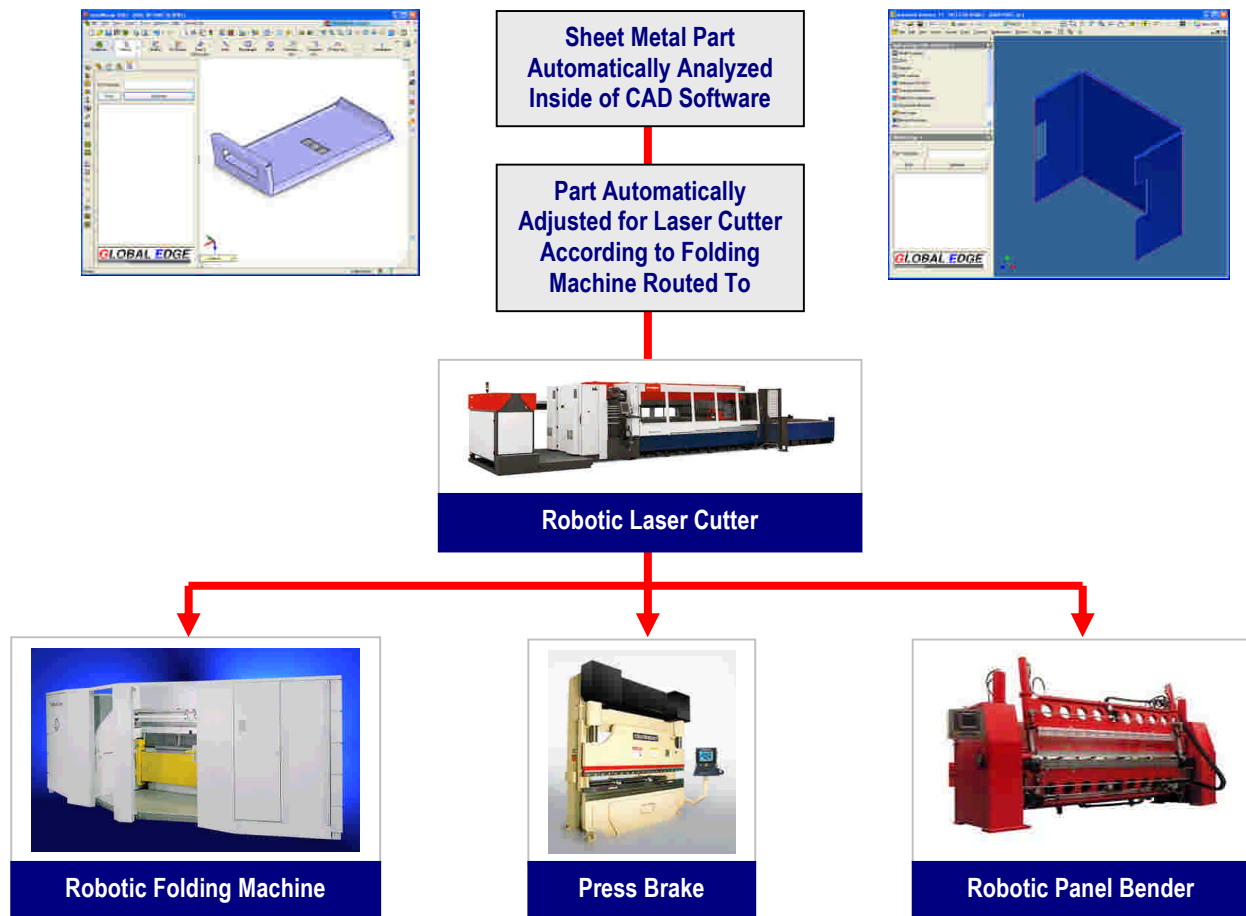
Standard Folding Language™

The *Global Edge[®] 11.0 – Productivity Suite* provides advanced software technology that automatically generates Folding Programs from 3D CAD Sheet Metal Parts without human intervention. The *Global Edge – Standard Folding Language™* eliminates the need for template folding programs and utilizes Artificial Intelligence software technology to automatically generate folding programs for Robotic Folding Machines, Press Brakes and Panel Benders.

Key Features & Benefits

- Eliminates Need for Template Folding Programs
- Helps Keep Expensive Shop Floor Folding Machines Busy
- Drastically Reduces Training Time for Press Brake Operators
- Significantly Speeds Up Manufacturing Cycles Times for Custom Products

Eliminates Manual Programming of Sheet Metal Folding Programs



Sheet Metal Part Automatically Produced without Machine Programming

Global Edge[®] 11.0 – Productivity Suite

The Power to Succeed in a Global Market

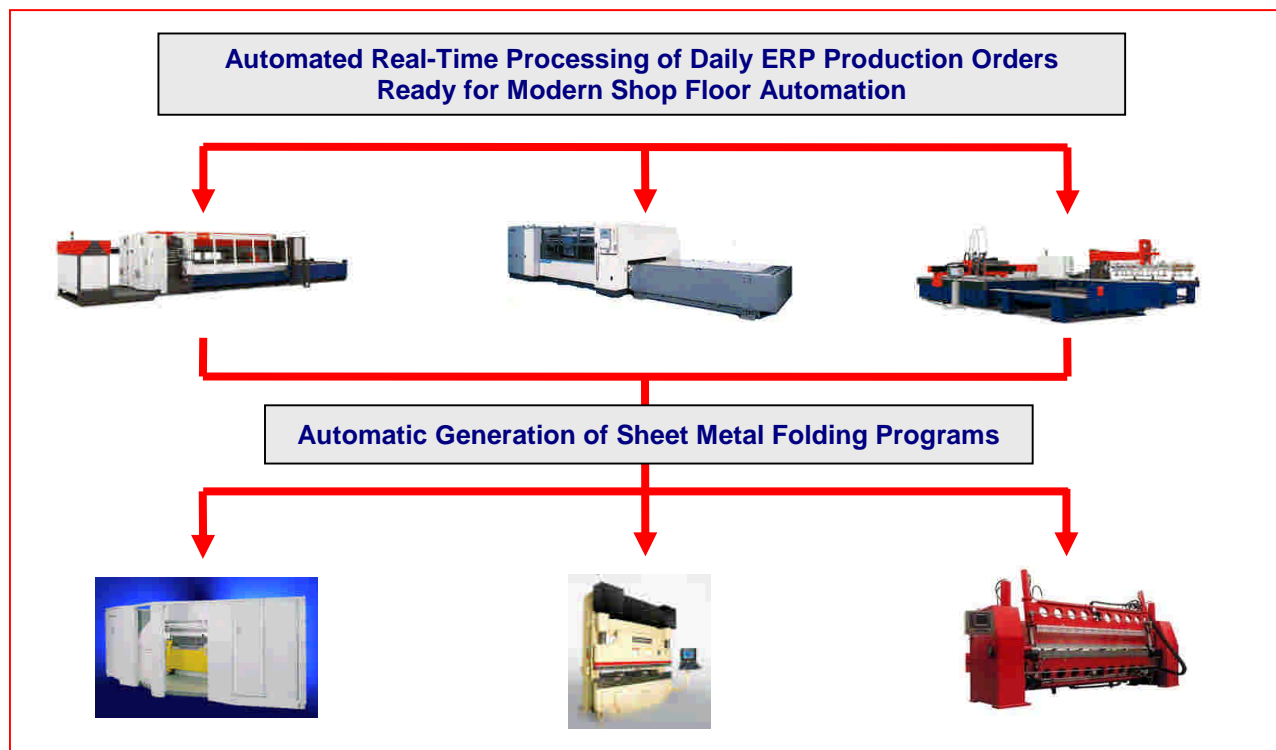
Automated Production Work Queue

The **Global Edge[®] 11.0 – Productivity Suite** provides advanced functionality that automates the daily manual processing of production orders. This includes the automated processing of 2D and 3D CAD drawings to create the information required for the automated nesting of parts, assemblies, and kits for automated laser cutting and folding of sheet metal components. Information processed can be sorted according to your scheduling / nesting requirements.

Global Edge integrates work orders directly with CAD to process parts that need to be produced. This process includes determining if an existing CAD drawing exists in the engineering library. If so, **Global Edge** can add necessary information to the part such as: engraved part numbers, cross hairs, and include sacrificial folding tabs required for sheet metal folding machines. **Global Edge** can also automatically create programs to control sheet metal folding machines based on information contained in the 3D CAD drawing.

Key Features & Benefits

- Eliminates Engineering Clerical Work to Produce Information for Shop Floor Equipment
- Automatic Creation of 2D & 3D CAD Drawings Based on Daily Production Runs
- Automatic Embedding of DXF Files with Manufacturing Parameters
 - Engraved Part Numbers
 - Crosshairs
 - Sacrificial Folding Tabs
- Automatic Assembly Production Kitting
- Automatic NC Program Generation & Distribution
 - SFL Sheet Metal Folding Programs
 - NC Machining
- Automatically Configures and Prepares CAD Drawings for Laser Cutter Nesting Software



Global Edge[®] 11.0 – Productivity Suite

The Power to Succeed in a Global Market

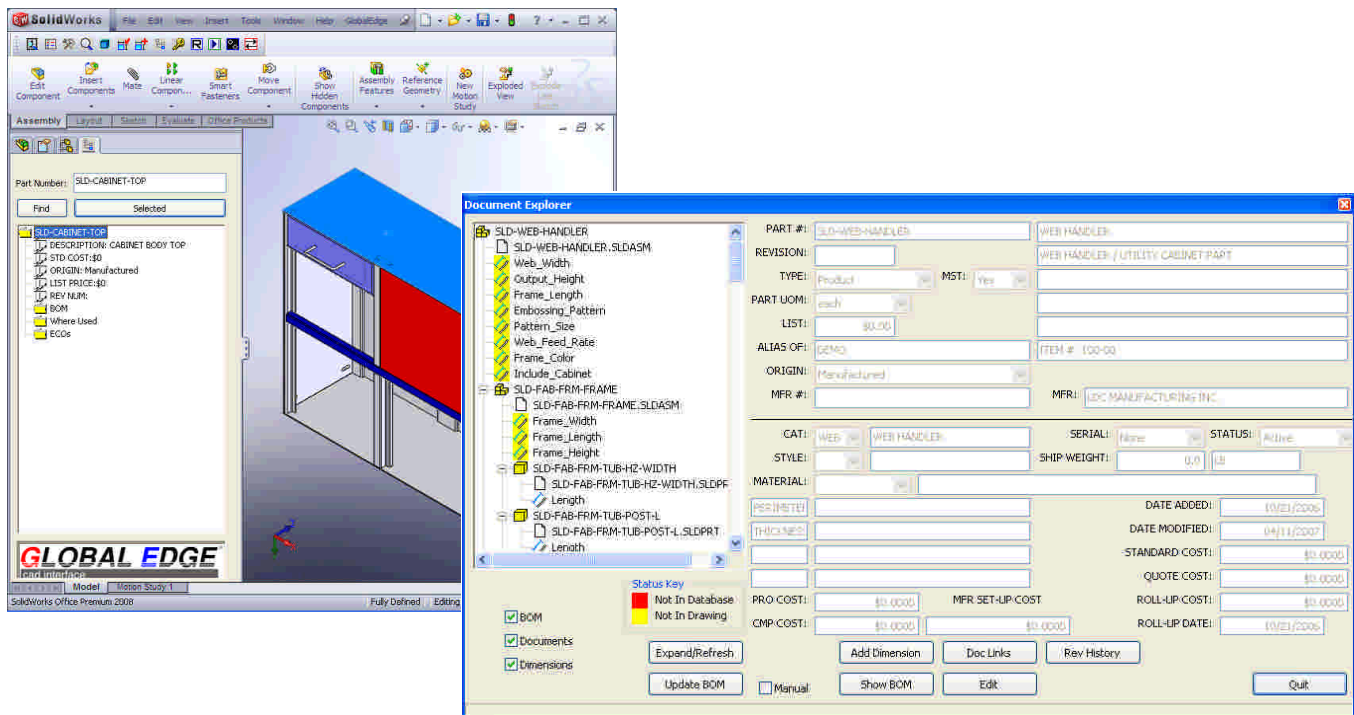
CAD to ERP Integration

The **Global Edge[®] 11.0 – Productivity Suite** provides advanced software technology that integrates and synchronizes CAD drawings with your ERP / Business System. This includes powerful functionality that simplifies the process of managing engineering changes and revisions within your CAD software that are automatically updated in your ERP / Business System.

The **Global Edge CAD Interface** provides an automated drawing import function that allows you to automatically vault and import your existing CAD drawings along with all of the CAD attribute information stored in those drawings. Also included is the ability to perform advanced part searches by customer, project, vendor, and extensive dimensional information.

Key Features & Benefits

- Automatically Synchronizes CAD Bill of Materials with ERP / Business System Bill of Materials
- Provides Powerful Part Searches Based on Attribute Information Stored in CAD Drawings and/or ERP / Business System
- Automatically Generates Configured CAD Drawings Based on Daily Production Orders
- Provides Automatic Document Vaulting and Revision History
- Eliminates Manual Retyping of Engineering Information into ERP / Business System
- Automatically Prepares CAD Drawings for Shop Floor Machinery



AMR Research: "... CAD Drawings and Bill of Materials files are in disagreement 90% of the time."

Automatically Synchronizes CAD Drawings with ERP / Business System

Global Edge[®] 11.0 – Productivity Suite

The Power to Succeed in a Global Market

Customer Success Stories

Reuse Rather than Re-Create – Quit Reinventing the Wheel!

“Without the Global Edge – Product Configurator, we would need to create hundreds of bill of materials (the list of damper components), which requires hundreds of engineering and clerical hours to create and maintain. Orders that once took up to four hours are now processed within 20 seconds.”

Steve Yoder, Damper Cell Manager
Johnson Controls – Watertown, Wisconsin

Cycle Time is Shrinking – My Customer Wants Everything “Yesterday!”

“Within one year of implementing Global Edge the time from order entry to shipment of custom power supplies decreased from four months to three weeks.”

John Garcia, V.P. Engineering
Lambda Electronics, Inc. – Melville, New York

Effectively Manage Your Enterprise!

“Global Edge has effectively introduced and updated a total program for Carron Net Company. Starting with the custom product Configurator and working through inventory, order entry, the general ledger and accounting, Global Edge has integrated a complete system. We have found the system easy to use and navigate, yet complex enough to handle our needs.”

Troy Christiansen, Vice President
Carron Net Company – Two Rivers, Wisconsin

Find the Right Information When You Need It!

“Global Edge has reduced the time spent entering data and searching for information resulting in 50% more design time available.”

Jeff Duxbury, Project Engineer
Nelson Industries – Black River Falls, Wisconsin

Effectively Control Bill of Materials & Documents!

“Logic Design Corporation is an excellent example of Total Quality Management; They have proven to me time and time again that customer satisfaction is their number one objective.”

M.J. Fox, Document Control Manager
Aztek Engineering Incorporated – Boulder, Colorado

Informix[®]

THE MAGAZINE • SUMMER 2000

Article Reprint

Logic Design Configurator a Breath of Fresh Air

WHETHER YOUR OFFICE BUILDING IS COOL AND COMFORTABLE or hot and stuffy, depends in part on devices called dampers and actuators. When a building’s HVAC system calls for customized dampers and actuators, that can mean a tremendous load of order processing and therefore added costs for the device supplier.

The Damper Production Facility at Milwaukee’s Johnson Controls, Inc., the world’s largest manufacturer of environmental control systems, has dramatically increased the number of custom orders it can process thanks to Informix partner Logic Design Corporation and its Global Edge - Product Configurator.

The Configurator is currently being used for custom orders in Johnson Control’s damper production cell. A damper, consisting of a shroud, an actuator, movable blades, and a variety of other customizable options, range from a few inches to a couple of feet wide, are used to control airflow in various heating and cooling applications.

“Without the Configurator, we would need to create hundreds of bills of material (the list of damper components), which requires hundreds of engineering and clerical hours to create and maintain,” says Steve Yoder, Damper Cell Manager for Johnson Controls.

Driven by the Informix Work Group Server database, the Global Edge - Product Configurator allows for real-time processing of complex custom orders requiring intricate configurations and calculations used by Johnson Control engineers. Orders that once took up to four hours are now processed within 20 seconds.

According to Lars Hedman, President of Logic Design Corporation, “What we’re doing for Johnson Controls is finding a way to link all of their islands of information together, from engineering to enterprise resource planning to the shop floor.”

Copyright © 2008 Logic Design Corporation – All Rights Reserved – Version 11.0.01

LOGIC DESIGN
corporation

161 West Wisconsin Avenue, Suite 2E • Pewaukee, WI 53072-3468
Phone: 262-695-1300 • Fax: 262-695-1313 • Web Site: www.ldcglobal.com

LOGIC DESIGN

corporation

Transforming Engineering & Manufacturing

Founded in 1983, Logic Design Corporation is a Software Development and Technology Integration Company that specializes in innovative, leading edge software solutions that help Engineer-To-Order manufacturing companies transform engineering and manufacturing to design and build products better, faster and cheaper. LDC helps your company stay ahead of the competition with proven products and services that are practical to implement and deliver a rapid Return On Investment. LDC enables manufacturing companies to achieve high levels of engineering productivity and help attain an integrated digital factory environment with products and services that include:



- ▶ ***Global Edge® 11.0 – Productivity Suite***
- ▶ ***2D / 3D CAD Programming***
- ▶ ***Shop Floor Integration / Automation Planning***
- ▶ ***Technology Integration Programming***

Johnson Controls, Cooper Power Systems, Siemens, and Lambda Electronics are some of the many companies that have benefited from the products and services of Logic Design Corporation. Benefits provided have included significantly reducing engineering and manufacturing cycle times by automating many of the manual time consuming workflow tasks that range from product configuration to drawing generation, to providing the shop floor with complete information when and where needed. For more information on how the products and services of Logic Design Corporation can help your company achieve significant productivity gains, faster delivery times, improved product quality, and reduced costs, visit www.ldcglobal.com

Mission Statement

“Our Goal is to provide manufacturers with innovative, cost-effective solutions for reducing costs, improving productivity and streamlining operations to achieve a competitive edge.”