

Global Edge® 11.0 – Productivity Suite
The Power to Succeed in a Global Market

**Empower Your Shop Floor
with Software That Helps
Maximize Production Output**

*Stay Ahead of Your Competition with
Leading Edge Technology*



www.ldcglobal.com

Table of Contents

- Executive Overview 3**
 - Adapting New Shop Floor Technology.....3
 - Reducing Labor Intensive Operations3
 - Empower the Shop Floor3
- Adapting Legacy Systems to Modern Automation..... 4**
 - Reliance On Legacy Systems.....4
 - Technology Advancements.....4
 - IT Infrastructure.....4
 - Impact of New Technology.....4
- Transforming Your Existing Technology 5**
 - Identifying What is Possible5
 - Cost Effective Solutions.....5
- Transformed Information Data Flow 6**
- Global Edge® 11.0 – Productivity Suite 7**
 - Automated Product Configuration / 3D CAD Drawing Generation8
 - Automated Reverse Engineering of G-Codes into 3D CAD Drawings9
 - Bi-Directional Integration of CAD / ERP / Shop Floor Automation10
 - Automated Production Work Queue.....11
- Rapid Return On Investment..... 12**
 - Corporate Results Achieved12
 - Shop Floor Results Achieved12
 - Product & Manufacturing Engineering Results Achieved12
- Real-World Success Stories 13**
- Success Story Article – Johnson Controls 14**
- About Logic Design Corporation 15**
 - Mission Statement15

Executive Overview

Some of the toughest challenges when it comes to incorporating advanced automation in the manufacturing operations of OEM manufacturers are integrating the technology with existing legacy systems on the shop floor, the IT infrastructure and a company's existing workflow. A company generally will not install robotic welders, folding machines, laser cutters, etc., if they can not efficiently generate information to drive this technology. They will also not implement new shop floor technology if prior manufacturing operations cannot produce components with tolerances and quality needed for downstream operations. The challenge is to integrate new technology without throwing out or reengineering the majority of legacy systems already in place.

Adapting New Shop Floor Technology

New technology, such as a laser cutter, can be limited by existing methods of generating geometry that may currently be fabricated on turret punch presses. Generating G-Code programs for use on these turret presses in combination with 2D template drawings have often created massive libraries that can be difficult to convert to take advantage of newer production technology. Finding solutions to problems like these can delay the incorporation of new technology needed to stay competitive.

Reducing Labor Intensive Operations

Turning a labor intensive manufacturing operation steadily into a technology intensive manufacturing operation can be the key to staying competitive against a world of new competitors across the globe. If it can be done in reasonable steps without disrupting operations, it becomes a viable choice over outsourcing or moving operations to a low wage corner of the globe. In a world where delivery time, quality and flexibility can be every bit as important as price, the ability to incorporate leading edge technology in manufacturing can be the difference between being a market leader and an also ran.

Empower the Shop Floor

The **Global Edge® 10.1 – Productivity Suite** along with the expert integration services of Logic Design Corporation (LDC) can provide manufacturers the tools to incorporate new technology allowing them to compete with anyone from anywhere. Whether it's automating the flow of data to the shop floor, automatically configuring products including the generating of 3D CAD geometry, or even reverse engineering G-Code programs into 3D CAD geometry, LDC can help solve the toughest challenges in manufacturing by "**Empowering the Shop Floor**".

Adapting Legacy Systems to Modern Automation

Manufacturing companies over the years build legacy systems in Engineering, Manufacturing and IT that are responsible for their success. These systems can also be a double edge sword that can also hold back the progress of a company. Because of the growing complexity of legacy systems, they can become more difficult to change and hold back the adoption of new technology.

Reliance On Legacy Systems

It is not uncommon for companies to have large databases of NC programs that are tied to specific production equipment. When these programs are tied to two dimensional template drawings and/or custom developed engineering software, the web that links processes together becomes wider reaching and can require changes in several systems to make advancements possible. If it requires the replacement of every system upstream from a machine on the shop floor to replace it with the latest technology, it makes it very difficult to justify cost upgrades. On the flip side, the longer a company waits to upgrade, the more difficult it becomes to maintain legacy systems with growing obsolescence. It also can put a company in a precarious position if a legacy system fails, and upgrades, repairs and/or replacements are done in a panic situation.

An example of a legacy system is the use of turret punches and G-Code program libraries to produce sheet metal parts. Over decades companies can build up literally tens of thousand of programs to manufacture specific parts. The modern replacement for turret punches is laser cutters. Laser cutters are typically driven by 2D DXF files produced by CAD software. Unless a company is completely reengineering their product line, it is usually a long difficult process to bring existing designs on line with an automated process. The transition to producing DXF files on demand can turn into a labor intensive process utilizing expensive engineering talent.

Technology Advancements

The rate at which new technology is emerging in various industries is beginning to mirror the rate that which computer technology is advancing. One of the reasons this is happening is more and more computer technology is being incorporated into production machinery enabling greater capabilities and flexibility into new equipment. That makes it more important and more difficult to anticipate where technology is going as systems are planned.

IT Infrastructure

Another component of the legacy systems in use is the IT infrastructure that is used to drive it. Shop paper that drives many processes can vary in completeness for a number of reasons. One reason is that in many companies the experienced worker on the shop floor knows with just minimal information how to build a product. It is not uncommon for books of template drawings on the shop floor to be rarely opened. This is great from the standpoint of productivity so long as nothing changes. It can be a real hindrance when it comes to product design changes or in the case of the loss of key personnel. Changing production methods quite often requires a change in IT infrastructure to get data to automated equipment. In this case, outdated IT systems can make automation a difficult task.

Impact of New Technology

The impact of new technology continues to ripple through out manufacturing enterprises. Finding the roadblocks and bottlenecks ahead of time is becoming an interesting challenge, but a challenge that can be overcome. LDC over the past couple of decades has worked closely with dozens of OEM manufacturing companies to solve workflow and information integration challenges that include: automatic configuration and drawing generation of simple-to-complex products, integrating CAD and engineering with the enterprise and shop floor, including the conversion and integration of legacy information to work with the latest engineering and manufacturing technology.

Transforming Your Existing Technology

To compete in the current world market, it is important to reduce the labor intensive portion of the manufacturing process wherever possible. A manufacturer in a developing country competes to a great measure on the advantage of low labor costs. These same manufacturers are however paying similar prices for commodities consumed in their products and the technology used in the manufacturing process. They are also often at a disadvantage when it comes to shipping costs and delivery time. Utilizing technology to transform the manufacturing process to tilt the playing field in your direction is the goal. The question is how to do it effectively.

Identifying What is Possible

Identifying what is possible is the first step. New technology can include: Laser Cutters and Markers, NC Folding Machines, Robotic Welders, Assembly Robots, etc. Each of these technologies can improve quality, reduce cycle times, reduce injuries, enable further technology improvements, and boost productivity. All of these types of technology also have in common the need for information to drive them. Providing proper information to new technologies can be more daunting as installing and learning to use the new production technology. The information has to not only be correct, but has to be delivered where needed and when it is needed. This is a challenge that has to be met for any transformation to be successful.

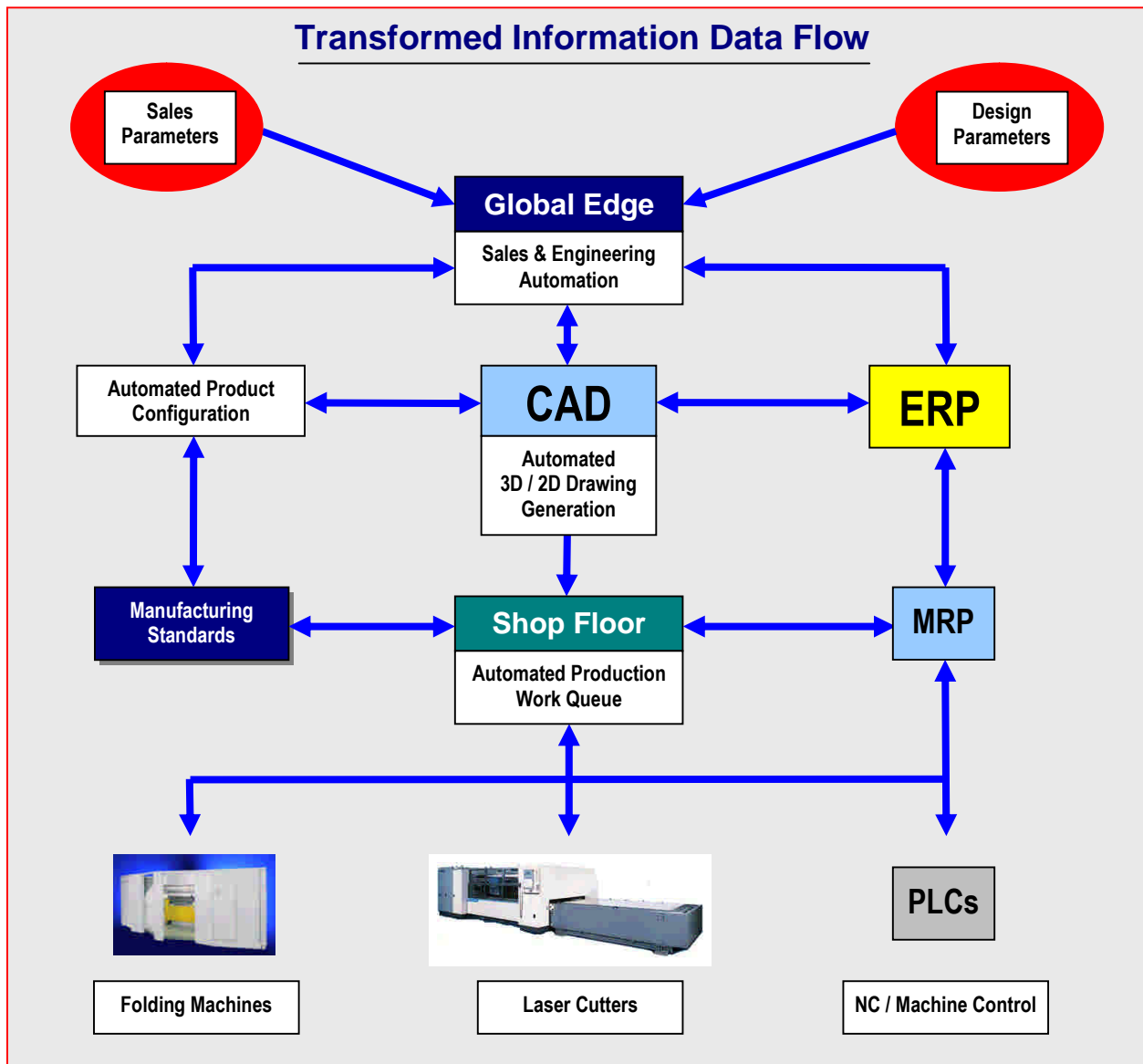
Cost Effective Solutions

The products and expert integration services provided by Logic Design Corporation (LDC) makes it cost effective to implement modern shop floor technology without disrupting the current engineering and manufacturing workflow process. Developed by Logic Design Corporation, LDC utilizes the ***Global Edge® 10.1 – Productivity Suite*** as a compliment to existing legacy systems by transforming and converting legacy data to be compatible with modern shop floor technology. ***Global Edge*** integrates with your ERP / Business system, Product Engineering and CAD to achieve an automated workflow produces information from a sales / production order to kitted 3D and 2D CAD drawings ready for the shop floor.

Global Edge provides the capability of producing / configuring 3D & 2D CAD drawings in accordance with both sales and design parameters. In addition, ***Global Edge*** can automatically convert G-Code programs for specific shop floor machines into 3D / 2D CAD drawings that can be utilized by the latest shop floor technology. This process is accomplished by ***Global Edge*** reverse engineering G-Code Program libraries to create active 3D and 2D drawings ready for production. ***Global Edge*** also automatically produces information based on 3D part drawings and Product Engineering such as programs to control folding machines, engrave part numbers, create sacrificial folding tabs, etc. This information is all brought together with an automated engineering and manufacturing workflow that delivers the proper real-time production information where needed.

Transformed Information Data Flow

The **Global Edge** system can help transform the flow of information within your company by automating workflow tasks and integrating real-time information between departments. **Global Edge** integrates directly with your ERP / Business system to access information such as process and materials costs to assist in the sales quoting process. **Global Edge** then takes this information a step further by processing sales and design parameters to automatically configure products with complete engineering and manufacturing rules. These parameters are processed by **Global Edge** to create complete bill of materials / routing information and automatic generation of both 2D and 3D CAD drawings. **Global Edge** eliminates the need to manually process engineering orders and produces the proper information to drive modern shop floor technology. **Global Edge** can reduce the entire process of sales quoting to order processing and manufacturing of custom configured products from days to hours with a streamlined, transformed information data flow.



From ERP > Through Engineering > To Manufacturing

Seamless Integration from Sales & Engineering to Final Product Shipment

Global Edge® 11.0 – Productivity Suite

The **Global Edge® 11.0 – Productivity Suite** is a powerful set of innovative software tools that allows you to automate the workflow between engineering, manufacturing and ERP to **"Empower the Shop Floor"**. **Global Edge** keeps your company ahead of the curve and competition with technology providing simplified methods to automate manual workflow tasks and process your legacy data into information that takes full advantage of the latest shop floor technology.



Global Edge works with your existing software and hardware technology and automates many of the time consuming manual workflow tasks that range from product configuration / quoting, to automatic drawing generation, and to the automated processing of orders with information ready to fully drive today's modern shop floor automation in both short and long production run environments. **Global Edge** can reduce the time required to process daily production orders from hours to minutes while helping to increase shop floor capacity and significantly reduce manufacturing lead times. **Global Edge** makes it possible for your company to effectively compete in a global marketplace and utilize modern shop floor automation to its full potential to achieve a digital factory environment.

The **Global Edge 11.01 – Productivity Suite** includes the following powerful software modules:

- ◆ **Global Edge – Sales / Product Configurator**
- ◆ **Global Edge – Bill of Materials / Routing Management**
- ◆ **Global Edge – CAD / BOM Interface / Drawing Generator**
- ◆ **Global Edge – Production Work Queue**
- ◆ **Global Edge – Sheet Metal Folding Program Generator**
- ◆ **Global Edge – Generic ERP Interface**

Automated Product Configuration / 3D CAD Drawing Generation

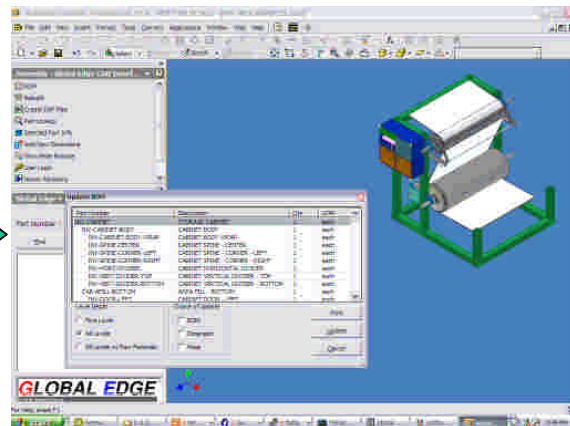
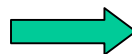
The **Global Edge 11.0 – Productivity Suite** provides advanced functionality to automate the process of configuring products and automatically producing both 2D and 3D CAD drawings associated with those configurations. **Global Edge** enables you to easily set-up Master Product Configurations based on engineering design rules, available product options, and automates the process of creating routings and NC programs to drive today's modern shop floor technology. **Global Edge** can integrate directly with your ERP / Business system to automatically create part numbers based on engineering and manufacturing rules.

Global Edge reduces the amount of time required to generate a sales quote for an "Engineered / Design-to-Order" product from several hours to minutes. **Global Edge** incorporates engineering rules into the sales quoting process to include the automated creation of bill of materials and routings utilizing "Real-Time" material and process costs from your ERP / Business System. The **Global Edge – Product Configurator** generates a product configuration based on customer specifications in a matter of seconds and greatly reduces the dependency on engineering for sales to produce accurate and timely sales quotes. As the quote configuration is generated, **Global Edge** can automatically produce 3D customer drawings, and the necessary drawings for both engineering and manufacturing. **Global Edge** provides the necessary capability to; swap, size and position CAD components such as holes, cut-outs, bends, etc. When the 3D CAD Model generation process is complete, the **Global Edge** drawing rebuild functionality can also automatically produce 2D drawings including DXF files that are ready for manufacturing.

- ▶ **Automatic Configuration of Simple-to-Complex Products**
- ▶ **Automatic Generation of Complete Information to Drive Modern Shop Floor Automation**
- ▶ **Automatic Generation of BOM & Routings w/ Material, Labor & Weight Cost Roll-Ups**
- ▶ **Automatic Sales Quote Generation of Simple-to-Complex Products**
- ▶ **Automatic Generation of 3D Customer Drawing for Sales Quote**
- ▶ **Automatic Generation of Engineering & Production Ready 2D / 3D CAD Drawings**

QUANTITY	DESCRIPTION	UNIT PRICE	TOTAL PRICE
1.00
...
...

Automatic Sales Quote Generation of Simple-to-Complex Products



Global Edge automatically produces 3D CAD drawings in seconds based on the output produced by the Product Configurator.

Johnson Controls: "Orders that once took 4 hours to process are now processed within 20 seconds using the Global Edge – Product Configurator."

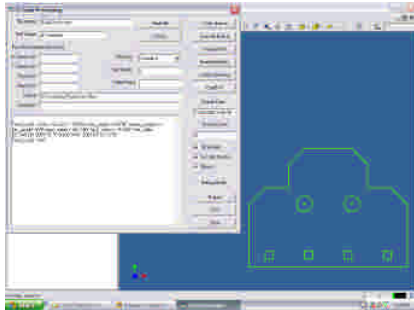
Reuse rather than re-create – quit reinventing the wheel!

"Without the Global Edge – Product Configurator, we would need to create hundreds of bill of materials (the list of damper components), which requires hundreds of engineering and clerical hours to create and maintain. Orders that once took up to four hours are now processed within 20 seconds." – Steve Yoder, Damper Cell Manager, Johnson Controls

Automated Reverse Engineering of G-Codes into 3D CAD Drawings

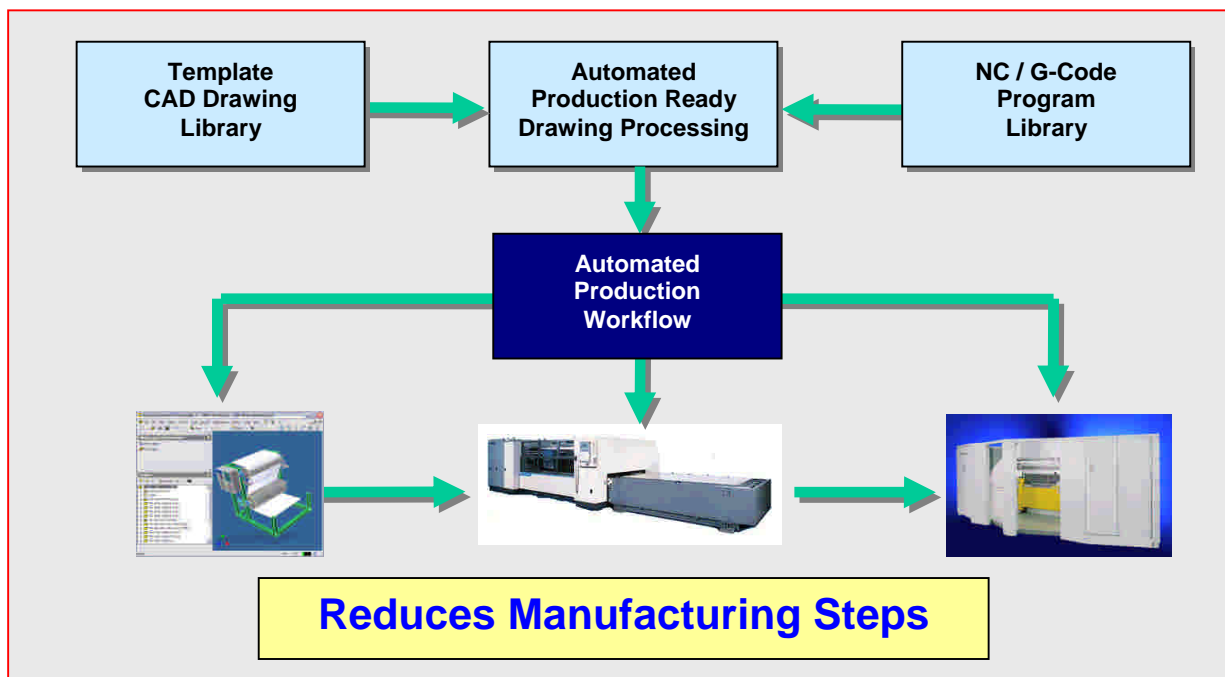
The **Global Edge 11.0 – Productivity Suite** includes functionality to automatically convert your legacy G-Code programs into both 2D and 3D CAD drawings that are ready for the shop floor. This process entails the automatic reading in of a G-Code program for a specific shop floor machine such as a turret punch and converting that program into a 3D CAD drawing. This functionality which is incorporated into the **Global Edge CAD Interface** software also includes functionality to process production orders from your ERP / Business system to make them shop floor ready for the latest in manufacturing technology. As each production order is processed, **Global Edge** can determine whether or not a 3D CAD drawing exists for a specific part. If that part drawing does not exist and G-Code program exists for a specific part number, **Global Edge** then produces a 3D CAD drawing in accordance to the G-Code program. Once the 3D CAD is either retrieved or produced by **Global Edge**, a 2D CAD drawing is automatically produced with necessary information such as: engraved part numbers, cross hairs, and the inclusion of sacrificial folding tabs when needed for sheet metal parts required for automated folding machines. **Global Edge** can process your production orders real-time from your ERP / Business system to automatically produce DXF drawings that are ready for laser cutter nesting software. **Global Edge** can help your company upgrade the capability of the shop floor to take advantage of laser cutter technology by automatically converting your legacy data to work with the latest shop floor technology.

- ▶ **Automatic Generation of 2D / 3D CAD Drawings from G-Code Program Library**
- ▶ **Automatic Conversion of NC Programs into 2D / 3D CAD Drawings**



- ✓ **Starts with G-Code Program**
- ✓ **Creates 3D CAD Drawing**
- ✓ **Produces Production Ready DXF File**

Global Edge automatically produces 3D Part drawings from your G-Code library & automatically processes them with your daily ERP Production Orders ready for modern shop floor automation.

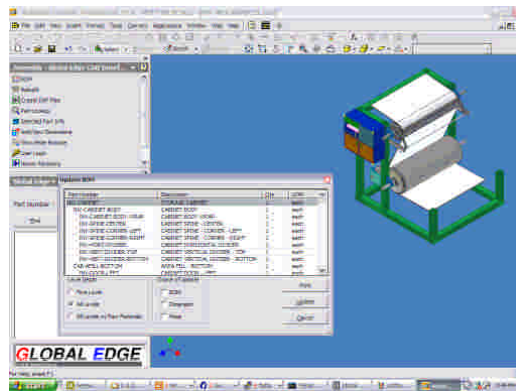


Bi-Directional Integration of CAD / ERP / Shop Floor Automation

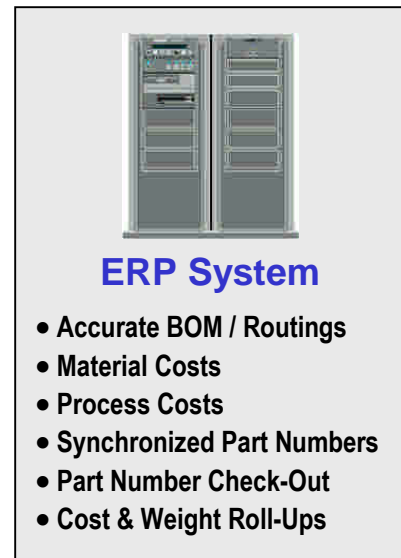
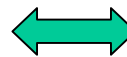
The **Global Edge 11.0 – Productivity Suite** provides a direct two-way, real-time information link between your 3D CAD drawings and your ERP / Business System. This interface automatically synchronizes the assembly bill of materials within the CAD drawing with the bill of materials stored in your ERP / Business system. As components are added, removed or modified in your CAD drawings, the bill of materials in your ERP / Business system is automatically updated. **Global Edge** allows you to maintain an engineering bill of materials in your CAD drawing that is synchronized with the manufacturing bill of materials contained in your ERP / Business system. This process also includes the automatic retrieval and vaulting of documents including revision control and revision histories. **Global Edge** integrates directly with machines on the shop floor to collect production information to provide your ERP / Business System with “Real-Time” production data.

Global Edge eliminates the manual retyping of the bill of materials and routing information into your ERP / Business system. Existing parts are easily found and reused instead of creating massive and expensive duplication of data and effort. As new parts and assemblies are created or modified in engineering, this information is dynamically updated and is made readily available at the enterprise level. Any customized changes are automatically updated in the assembly with the material and process costs re-rolled up and automatically updated back to ERP. **Global Edge** improves information accuracy throughout the quoting and design process and eliminates retyping information from CAD back to ERP or vice versa.

- ▶ **Automatically Synchronizes CAD Bill of Materials with ERP Bill of Materials**
- ▶ **Eliminates Manual Retyping of Engineering Information into ERP System**
- ▶ **Drastically Reduces Engineering Clerical Work & Improves Information Accuracy**
- ▶ **Provides Accurate “Real-Time” Information To and From Shop Floor**



**Global Edge automatically synchronizes
3D CAD Drawings with ERP**



AMR Research: “... CAD Drawings and Bill of Materials files are in disagreement 90% of the time.”

Cycle time is shrinking – my customer wants everything “yesterday!”

“Within one year of implementing Global Edge the time from order entry to shipment of custom power supplies decreased from four months to three weeks.” – John Garcia, V.P. Engineering, Lambda Electronics

Find the right information when you need it!

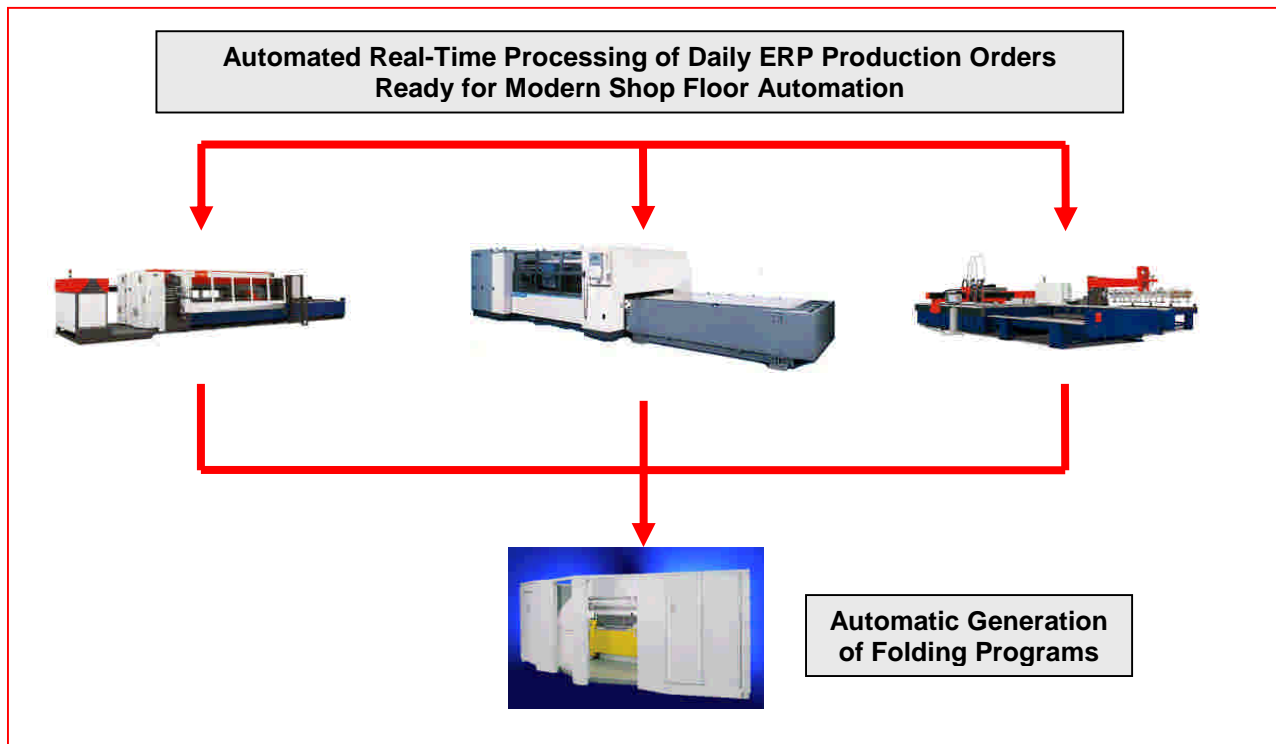
“Global Edge has reduced the time spent entering data and searching for information resulting in 50% more design time available.” – Jeff Duxbury, Project Engineer, Nelson Industries

Automated Production Work Queue

The **Global Edge 11.0 – Productivity Suite** integrates directly with your ERP / Business system to eliminate the manual processing of production orders. This includes the automated processing of 3D and 2D CAD drawing information made ready for automated nesting of parts, assemblies, and kits for automated laser cutting and folding of sheet metal components. Information processed can be sorted according to your scheduling / nesting requirements.

Global Edge includes a **Generic ERP Interface** that integrates with your ERP / Business system to automatically process Production / Work Orders. This module can process daily order information from your ERP / Business system by integrating it with engineering and CAD to automatically process information ready for shop floor automation. **Global Edge** integrates work orders directly with CAD to process parts that need to be produced. This process includes determining if an existing CAD drawing exists in the engineering library. If so, **Global Edge** can add necessary information to the part such as: engraved part numbers, cross hairs, and include sacrificial folding tabs required for sheet metal folding machines. **Global Edge** can also process existing NC programs such as G-Codes by automatically converting them into 3D and 2D CAD drawings that are ready for nesting software and the laser cutter. **Global Edge** can also automatically create programs to control sheet metal folding machines based on information contained in the 3D CAD model.

- ▶ **Automatic “Real-Time” Processing of Daily ERP Production Orders**
- ▶ **Automatic Creation of 2D & 3D CAD Drawings Based on Daily Production Runs**
- ▶ **Automatic Processing of G-Code Programs to Produce Production Ready CAD Drawings**
- ▶ **Automatic Embedding of DXF Files with Manufacturing Parameters**
 - **Engraved Part Numbers**
 - **Crosshairs**
 - **Sacrificial Folding Tabs**
- ▶ **Automatic Assembly Production Kitting**
- ▶ **Automatic NC Program Generation & Distribution**
 - **RAS Folding Program**
 - **NC Machining**



Rapid Return On Investment

The ***Global Edge® 11.0 – Productivity Suite*** is an innovative leading edge software solution that has been successfully implemented at manufacturing companies that range from small to Fortune 500. ***Global Edge*** is an affordable “off-the-shelf” software solution that can be rapidly implemented and yields high returns in time and efficiency savings. ***Global Edge*** integrates with most ERP / Manufacturing / Accounts systems and can leap frog your business past the competition with a proven system that shows dramatic proven results.

Corporate Results Achieved

- ✓ ***Faster Time-to-Market***
- ✓ ***Offer More Product Options***
- ✓ ***More Competitive in Global Marketplace***
- ✓ ***Increased Customer Satisfaction***
- ✓ ***Capture Greater Market Share***
- ✓ ***Higher Profits***

Shop Floor Results Achieved

- ✓ ***Better Products / Quality***
- ✓ ***Faster Production / Reduced Manufacturing Steps***
- ✓ ***Lower Manufacturing Costs***

Product & Manufacturing Engineering Results Achieved

- ✓ ***Reduces Design Time From Hours to Minutes for ETO / Configurable Products***
- ✓ ***Automates Product Configuration Process***
- ✓ ***Automates 3D Drawing Generation Process***
- ✓ ***Automatically Converts Legacy G-Code Programs into 3D Drawings***
- ✓ ***Automatically Generates Production Ready DXF Files***
- ✓ ***Adapts Legacy Systems to Modern Shop Floor Automation***
- ✓ ***Integrates Engineering & Enterprise with Shop Floor***

Real-World Success Stories

Over the past 20 years, Logic Design Corporation has helped manufacturing companies that range from small to Fortune 200 with innovative solutions that have transformed their operations. Here is what our customers have to say:

Cycle Time is Shrinking – My Customer Wants Everything “Yesterday!”

“Within one year of implementing Global Edge the time from order entry to shipment of custom power supplies decreased from four months to three weeks.”

John Garcia, V.P. Engineering
Lambda Electronics, Inc. – Melville, New York

Reuse Rather than Re-Create – Quit Reinventing the Wheel!

“Without the Global Edge – Product Configurator, we would need to create hundreds of bill of materials (the list of damper components), which requires hundreds of engineering and clerical hours to create and maintain. Orders that once took up to four hours are now processed within 20 seconds.”

Steve Yoder, Damper Cell Manager
Johnson Controls – Watertown, Wisconsin

Find the Right Information When You Need It!

“Global Edge has reduced the time spent entering data and searching for information resulting in 50% more design time available.”

Jeff Duxbury, Project Engineer
Nelson Industries – Black River Falls, Wisconsin

Effectively Manage Your Enterprise!

“Global Edge has effectively introduced and updated a total program for Carron Net Company. Starting with the custom product Configurator and working through inventory, order entry, the general ledger and accounting, Global Edge has integrated a complete system. We have found the system easy to use and navigate, yet complex enough to handle our needs.”

Troy Christiansen, Vice President
Carron Net Company – Two Rivers, Wisconsin

Effectively Control Bill of Materials & Documents!

“Logic Design Corporation is an excellent example of Total Quality Management; They have proven to me time and time again that customer satisfaction is their number one objective.”

M.J. Fox, Document Control Manager
Aztek Engineering Incorporated – Boulder, Colorado

Increase Engineering Productivity!

“Global Edge allows engineering to control the product which has dramatically increased the efficiency of the engineering and manufacturing departments.”

Andrew Johnsen, Electrical Engineer
Lambda Electronics, Inc. – Melville, New York

Informix®

THE MAGAZINE • SUMMER 2000

Article Reprint

Logic Design Configurator a Breath of Fresh Air

WHETHER YOUR OFFICE BUILDING IS COOL AND COMFORTABLE or hot and stuffy, depends in part on devices called dampers and actuators. When a building's HVAC system calls for customized dampers and actuators, that can mean a tremendous load of order processing and therefore added costs for the device supplier.

The Damper Production Facility at Milwaukee's Johnson Controls, Inc., the world's largest manufacturer of environmental control systems, has dramatically increased the number of custom orders it can process thanks to Informix partner Logic Design Corporation and its Global Edge - Product Configurator.

The Configurator is currently being used for custom orders in Johnson Control's damper production cell. A damper, consisting of a shroud, an actuator, movable blades, and a variety of other customizable options, range from a few inches to a couple of feet wide, are used to control airflow in various heating and cooling applications.

"Without the Configurator, we would need to create hundreds of bills of material (the list of damper components), which requires hundreds of engineering and clerical hours to create and maintain," says Steve Yoder, Damper Cell Manager for Johnson Controls.

Driven by the Informix Work Group Server database, the Global Edge - Product Configurator allows for real-time processing of complex custom orders requiring intricate configurations and calculations used by Johnson Control engineers. Orders that once took up to four hours are now processed within 20 seconds.

According to Lars Hedman, President of Logic Design Corporation, "What we're doing for Johnson Controls is finding a way to link all of their islands of information together, from engineering to enterprise resource planning to the shop floor."

About Logic Design Corporation

Founded in 1983, Logic Design Corporation is a leading technology integration / software development company that specializes in helping manufacturing companies transform engineering and manufacturing with innovative, leading edge solutions that **"Empower the Shop Floor"**. LDC empowers manufacturing companies to achieve a digital factory environment with products and services that include:

- ▶ **Global Edge® 11.0 – Productivity Suite**
- ▶ **2D / 3D CAD Programming**
- ▶ **Shop Floor Integration / Automation Planning**
- ▶ **Technology Integration Programming**
- ▶ **Manufacturing Consulting**

Johnson Controls, Cooper Power Systems, Siemens, and Lambda Electronics are some of the many companies that have benefited by implementing technology developed by LDC. Benefits provided have included reducing engineering cycle times from hours to minutes, processing of internet orders in real-time for custom products, and integrating CAD and engineering with ERP and manufacturing to automate manual workflow processes to improve information accuracy resulting in significant productivity gains, faster delivery times and improved product quality. For more information on the products and services of Logic Design Corporation, visit www.ldcglobal.com



LOGIC DESIGN
corporation

161 West Wisconsin Avenue
Suite 2E

Pewaukee, WI 53072-3468

Phone: 262-695-1300

Fax: 262-695-1313

www.ldcglobal.com

Information: info@ldcglobal.com

Mission Statement

"Our Goal is to provide manufacturers with innovative, cost-effective solutions for reducing costs, improving productivity and streamlining operations to achieve a competitive edge."