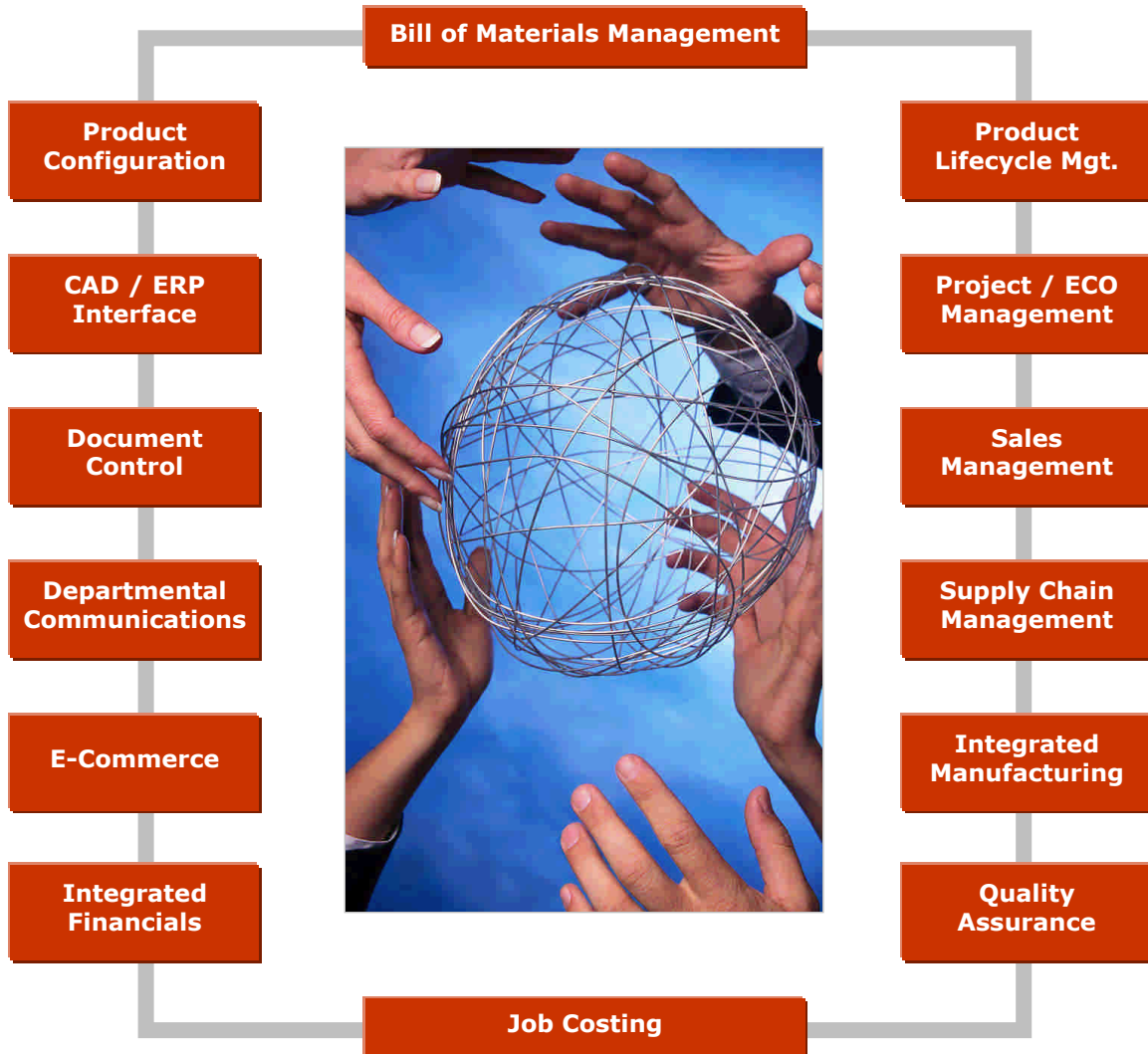


Global Edge[®] 11.0 – Enterprise Edition

The Power to Succeed in a Global Market



Taking Productivity to the Next Level

Global Edge[®] is a Registered Trademark of Logic Design Corporation.

Copyright © 2008 Logic Design Corporation – All Rights Reserved – Version 11.0

LOGIC DESIGN
corporation

161 West Wisconsin Avenue, Suite 2E • Pewaukee, WI 53072-3468
Phone: 262-695-1300 • Fax: 262-695-1313 • Web Site: www.lcdglobal.com

Global Edge® 11.0 – Enterprise Edition

Global Edge® 11.0 – Enterprise Edition is an affordable, off-the-shelf, modular, fully-integrated ERP / Accounting system designed for Small-to-Medium sized manufacturing companies. **Global Edge** provides an innovative method to increase productivity, improve information accuracy, effectively communicate and collaborate between departments. **Global Edge** starts with engineering and the design of the product by integrating CAD and “real-time” product information with ERP for easy collaboration with sales, purchasing, manufacturing and accounting. **Global Edge** is driven by a powerful product configuration engine that automates the task of configuring simple-to-complex bill of materials and routings, producing fast accurate sales quotes and cost roll-ups, and the automated generation of simple-to-complex CAD drawings. **Global Edge** simplifies and speeds up the entire workflow process from design, quoting, purchasing and manufacturing to final product shipment.

Global Edge creates a “paperless” manufacturing environment that eliminates duplication of effort by eliminating the manual retyping of the same information from department to department. As new products are designed, or existing products redesigned, **Global Edge** makes the right information available to the right people when they need it. **Global Edge** allows engineers to engineer rather than spending time doing data entry. **Global Edge** integrates bill of materials and project management with enterprise document control to simplify the retrieval of necessary information. **Global Edge** helps improve the inefficiencies of searching for drawings, documents, existing designs and parts numbers while eliminating duplicate information throughout the enterprise. **Global Edge** drastically reduces the product cycle times by making it easy to find existing product information and not having to spend time reinventing the wheel.

Global Edge helps companies coordinate and streamline their operations to effectively compete in both strong and weak economic times. **Global Edge** combines the capabilities of PDM, PLM, ERP, SCM, MES and CRM systems into an integrated solution that provides real-time information throughout the enterprise. **Global Edge** can standalone or integrates with most ERP / Legacy systems.



Global Edge® simplifies the entire workflow process and makes it easy to effectively collaborate enterprise-wide.

Standalone / Fully-Integrated Modules:

- Bill of Materials / Product Configuration
- Engineering / Project Management
- CAD / ERP Interface
- Document Control
- CRM (Sales, Service & Quoting)
- Supply Chain Management
- Integrated Manufacturing
- Integrated Financials

Goals / Challenges Addressed:

- Respond Quickly to Market Changes
- Provides Agile Manufacturing
- Effectively Manage Entire Product Lifecycle
- Reduce Product Cycle Times
- Faster Time-to-Market
- Increase Productivity
- Automate / Eliminate Repetitive Manual Workflow Tasks
- Improve Product Quality / Reduce Costs
- Eliminate Duplication of Effort / Information
- Improve Information Accuracy
- Fully Integrated Information System to Streamline Operations
- Effective Collaboration & Communications Throughout Enterprise

Global Edge – Return On Investment:

✓ Helps Reduce Product Cycle Times	✓ Automates Time Consuming Workflow Tasks
✓ Helps Increase Productivity	✓ Helps Streamline Operations / Reduce Costs
✓ Eliminates Duplication of Information / Effort	✓ Provides Better Enterprise Communications
✓ Helps Improve Information Accuracy	✓ Real-Time Product Information Enterprise-Wide

Copyright © 2008 Logic Design Corporation – All Rights Reserved – Version 11.0

Global Edge® – Fully Integrated Modules

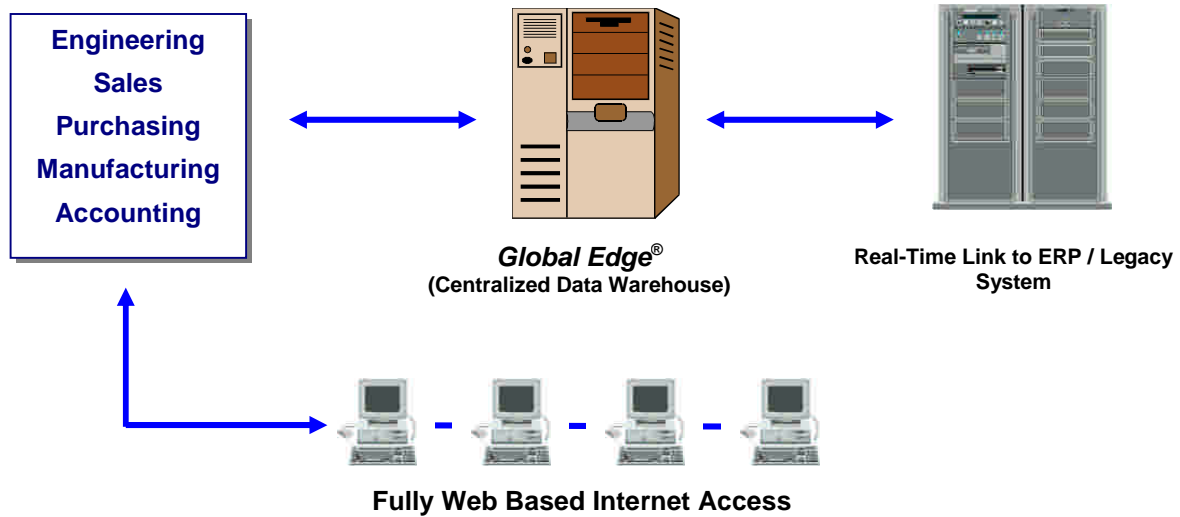
Global Edge includes the following modules that can either standalone or operate as a fully-integrated information workflow system:

BOM / Product Configuration <ul style="list-style-type: none">• Bill of Materials Management• Powerful “Where-Used”• Direct Interface to CAD / ERP• Automated Product Configuration• Automated BOM / Routings / Cost Roll-Ups• Automated Drawing Generation• Automated Link to Production• Electronic Cut Lists• Integrated Document Control• Enterprise Integration	Engineering / Project Management <ul style="list-style-type: none">• Engineering Data Warehouse• Engineering / PDM Workflow• Design & Document Approval• Version & Release Control• Project / ECO Management• Errata Problem Reporting• Professional Billing / Project Accounting• Time & Attendance• Customer Service / Technical Support• Enterprise Integration	CAD / ERP Interface <ul style="list-style-type: none">• Interface to Most Major CAD Systems• Dynamic CAD / ERP Link• Product Configurator Link• Integrated Document Control• Electronic Parts Catalog• Real-Time Part Validation• Enterprise Integration
Integrated Financials <ul style="list-style-type: none">• Order Entry / Billing• Accounts Receivable• Accounts Payable / Purchase Order• Inventory Control• Shipping & Receiving• General Ledger / Bank Account• Fixed Assets Management• Payroll Time & Attendance• Enterprise Integration	The Power to Succeed	Document Control <ul style="list-style-type: none">• Secure Document Drag & Drop Vaulting• Advanced Document Searching• Document “Where-Used”• Web Accessible• Document Check-In / Check-Out• Automated Revision Control & Approval• Document Links Throughout ERP• Unlimited Document File Types• Document Access & Security Control• Enterprise Integration
Integrated Manufacturing <ul style="list-style-type: none">• Job / Work Order Maintenance• Critical Path / Material Requirements Planning• Scheduling / Capacity Planning• Real-Time On-Line Job Status• Production Reporting / Job Costing• Inspection & Quality Reporting• Lot & Serial Tracking & Traceability• Bar Coding & Scanning• Machine & Tool Maintenance• PLC Interface / Paperless Mfg.• Enterprise Integration	Supply Chain Management <ul style="list-style-type: none">• Supplier / Purchase Order Management• MRP Purchasing Report• Automated Request for Quote• Automated Purchase Order Generation• Consolidated Purchasing• Critical Path Ordering• Supplier Rating / Performance• Enterprise Integration	CRM (Sales, Service & Quoting) <ul style="list-style-type: none">• Sales Force / Marketing Automation• Prospect / Lead / Contact Mgt.• Advanced Tickler Function• Automated Quoting / Product Configuration• Contact / Sales History Look-Up• Literature Fulfillment / Mailing List Management• Sales & Mkt. Performance Tracking• Remote Internet Access• Direct Link to Order Entry• Enterprise Integration

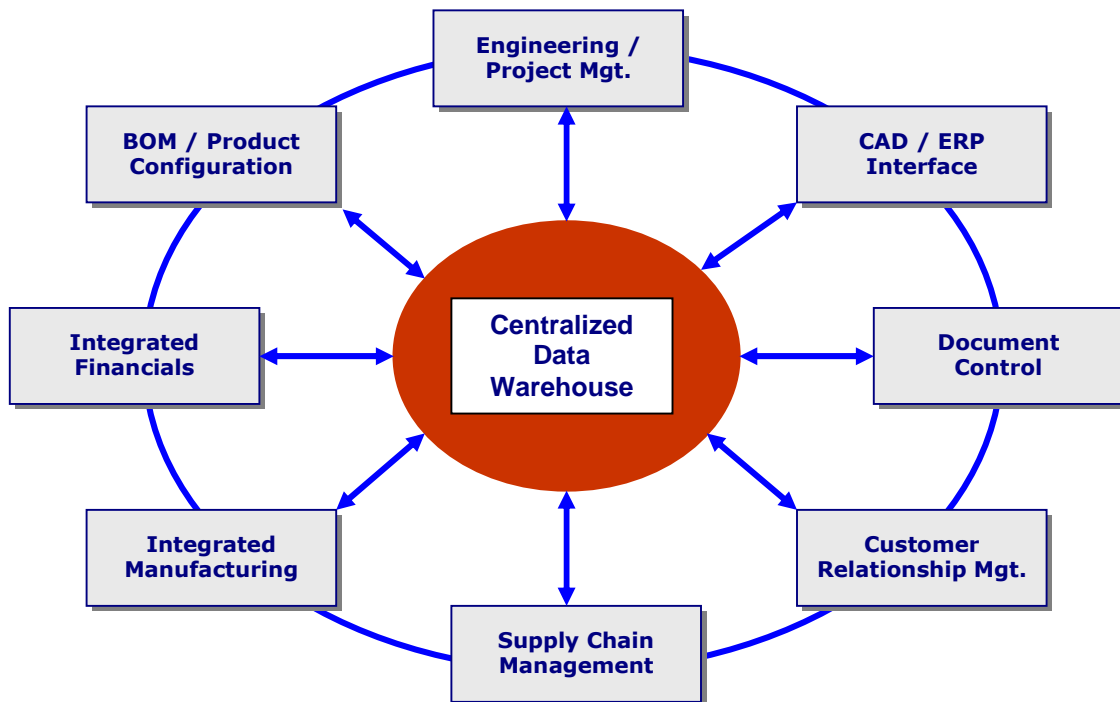
Global Edge® Provides the Functionality to Help Your Company Succeed in a Competitive Global Market

Copyright © 2008 Logic Design Corporation – All Rights Reserved – Version 11.0

Global Edge® – Enterprise Workflow Diagram



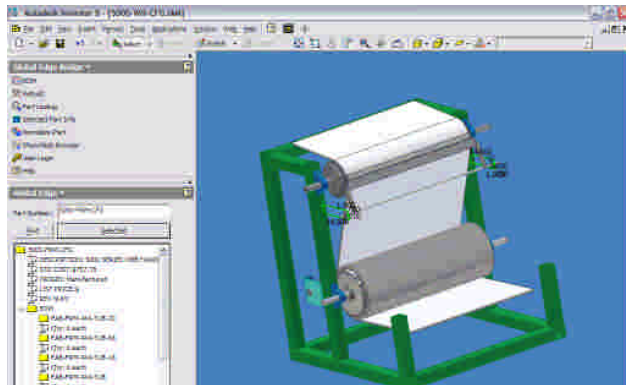
Global Edge® Helps Ensure Everyone is on the Same Page



Global Edge® Provides “Real-Time” Product Data Enterprise-Wide

Copyright © 2008 Logic Design Corporation – All Rights Reserved – Version 11.0

Bill of Materials / Product Configuration



Global Edge® helps increase productivity and improves information accuracy by automating the bill of materials process.

Global Edge® – Bill of Materials / Product Configuration is a full-functioned bill of materials management system designed to manage parts, assemblies, products and routings from initial design to final product shipment. Driven by a powerful product configuration engine, **Global Edge** automates the task of creating simple-to-complex, multi-level product assemblies including routings and cost roll-ups. With a direct interface to most major 3D CAD and ERP systems, **Global Edge** produces an accurate bill of materials that is stored in a “real-time” engineering data warehouse to which sales, purchasing, manufacturing and accounting have easy access.

Global Edge allows engineering to easily develop product configuration rules that your sales department can then use to independently generate simple-to-complex sales quotes incorporating material and labor costs fed by accounting. **Global Edge** offers “soft coded” product rules that provide the intelligence of how your products are designed and manufactured. **Global Edge** eliminates invalid product configurations and is easy enough to use by your order entry staff. Information generated can be fed to 3D CAD for automatic drawing generation and/or electronic cut lists sent directly to machines on the shop floor for production.

Key Module Features:

- Bill of Materials Management
- Powerful “Where-Used”
- Direct Interface to CAD / ERP
- Automated Product Configuration
- Automated BOM / Routings / Cost Roll-Ups
- Automated Drawing Generation
- Automated Link to Production
- Electronic Cut Lists
- Integrated Document Control
- Enterprise Integration

Goals / Challenges Addressed:

- Reduce Engineering Design Cycle Times
- Automate Configuration of Simple-to-Complex Products
- Generate Accurate Bill of Materials / Routings
- Integrate Bill of Materials with Document Control
- Easily Find Existing Parts & Documents
- Eliminate Duplicate Part Numbers / Orphan Parts
- Centralize & Consolidate Multiple Bill of Materials Databases
- Increase Design Reuse

Bill of Materials / Product Configuration – Return On Investment:

- | | |
|---|---|
| ✓ | Generate Simple-to-Complex Product Configurations in Seconds |
| ✓ | Eliminates Duplication of Information / Effort |
| ✓ | Improved Information Accuracy / Less Rework |
| ✓ | Engineering Product Data Shared Real-Time Electronically Enterprise-Wide |

Key Features & Benefits (Bill of Materials / Product Configuration):

Key Features	Benefits
Bill of Materials Management	Global Edge includes a powerful, full featured bill of materials management system designed to efficiently manage parts, assemblies, products and routings from initial design to final product shipment. Global Edge integrates bill of materials with CAD to provide a foundation of accurate product information that is accessible enterprise-wide.
Powerful “Where-Used”	Global Edge incorporates powerful “Where-Used” searching capabilities that makes it easy to determine where components and/or assemblies are used in specific products and/or assemblies throughout the system.
Direct Interface to CAD / ERP	Global Edge includes a bill of materials interface between most major 3D CAD systems that provides real-time product data enterprise-wide. This functionality ensures that the bill of materials in your CAD drawings matches your ERP / Accounting system.
Automated Product Configuration	Built in to Global Edge is a powerful and very flexible Product Configuration Engine that automates the process of engineering and configuring of simple-to-complex products. The product configuration engine adapts to most product lines without the need for custom programming. Global Edge allows engineering to establish a set of “soft coded” rules on how a product is designed and manufactured. These rules automate the process creating an accurate bill of materials and routings in a matter seconds. The Product Configuration Engine can run in a real-time mode to process smart part numbers to produce a valid bill of materials, including routings and an electronic cut list for the shop floor to support a “Paperless Manufacturing” environment.
Automated BOM / Routings / Cost Roll-Ups	Global Edge includes built-in functionality to provide accurate cost roll-ups based on the time and materials required to manufacture a product, assembly or component. The system calculates these costs based on current standard inventory part and raw material costs, and the labor costs based on the routings.
Automated Drawing Generation	Output from the Product Configuration Engine can feed most major 3D CAD systems to automatically produce simple-to-complex drawings in a matter of seconds.
Automated Link to Production	Global Edge provides an automated link to production by producing the necessary information to support a “Paperless Manufacturing” environment.
Electronic Cut Lists	Global Edge creates electronic cut lists for manufacturing to expedite the processing of custom orders quickly.
Integrated Document Control	Built into Global Edge is a fully featured Document Control system that utilizes a product’s bill of materials structure to securely vault and retrieve documents. This provides virtually unlimited methods to search for documents by parts, assemblies, routings, projects, engineering changes, jobs, work orders, employees, vendors, customers, etc.
Enterprise Integration	Global Edge provides “real-time” information integration between engineering, sales, purchasing, manufacturing and accounting to speed up and simplify the entire workflow process from design to final product shipment. Global Edge eliminates the retyping of the same information from department to department and makes the right information available “on-demand” to people who need it.

Engineering / Project Management



Global Edge® improves the engineering workflow process by making projects and orders easier to manage and expedite.

Global Edge® – Engineering / Project Management is a full functioned engineering product data management workflow system designed to improve the efficiency and productivity of an engineering department. **Global Edge** helps forge a strong partnership between engineering, manufacturing, sales, purchasing and accounting to provide accurate, real-time information for every project and job in production.

Global Edge eliminates retyping the same information from department to department to help maintain accuracy and eliminate duplication of effort. **Global Edge** speeds time-to-market by providing the right information to right people when they need it. **Global Edge** includes a full functioned project / engineering change order management system that makes it easy to track project time, revision and engineering changes. **Global Edge** includes full functioned project accounting and professional billing for services rendered.

Key Module Features:

- Engineering Data Warehouse
- Engineering / PDM Workflow
- Design & Document Approval
- Version & Release Control
- Project / ECO Management
- Errata Problem Reporting
- Professional Billing / Project Accounting
- Time & Attendance
- Customer Service / Technical Support
- Enterprise Integration

Goals / Challenges Addressed:

- Reduce Engineering Cycle Times
- Provide Better Customer Service
- Easy Retrieval of Past Project Histories
- Streamline Project / ECO Workflow Process
- Establish On-Line Engineering Knowledge Database
- Better Planning / Allocation of Project Resources
- Speed-Up Design & ECO Approval Process
- Accurate Version & Release Control
- Accurate Tracking of Project Time & Expenses
- Integrate Engineering with Enterprise
- Achieve ISO 900x Certification

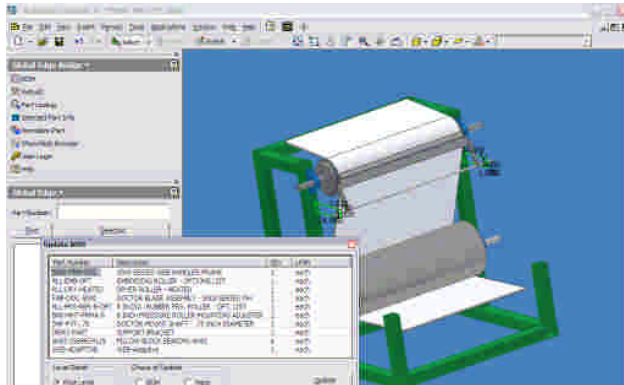
Engineering / Project Management – Return On Investment:

- | | |
|---|---|
| ✓ | Reduced Engineering / Project Costs |
| ✓ | Less Rework |
| ✓ | Improved Product Quality |
| ✓ | Shortened Engineering Cycle Times |
| ✓ | Efficient Distribution of Engineering Information to Enterprise |
| ✓ | Real-Time Project Status Reporting |
| ✓ | Improved Engineering Productivity |

Key Features & Benefits (Engineering / Project Management):

Key Features	Benefits
Engineering Data Warehouse	Global Edge provides an engineering knowledge base of information of how products are designed and manufactured. This product information is stored in a centralized Engineering Data Warehouse and makes it available on-line throughout the enterprise in a real-time environment. The Engineering Data Warehouse helps speed up the entire workflow process from initial design to final product shipment to ensure that everyone is working on the same page.
Engineering / PDM Workflow	Global Edge includes an easy to implement, full functioned Engineering / PDM Workflow system designed to efficiently manage your engineering efforts. Global Edge speeds the entire design and manufacturing process by providing complete and timely information to the proper people when they need it.
Design & Document Approval	Global Edge expedites the design and document approval process by making CAD drawings and related documents readily available to the right people for their approval as products are designed and/or modified.
Version & Release Control	Global Edge automates the version and release control process as documents are checked in and checked out of the document vault. Global Edge helps enforce the proper workflow discipline by requiring employees to follow-up with the proper procedures throughout the workflow process.
Project / ECO Management	Global Edge includes a full functioned Project / Engineering Change Order Management system to efficiently manage projects and engineering changes. Global Edge tracks project and job hours from design to final product shipment including post sale support which includes a complete on-line project order history for each customer. Global Edge eliminates having to figure out what was done for customers on past projects by making this information available on-line. Global Edge provides a simplified method to communicate engineering changes with manufacturing, sales, customers and vendors.
Errata Problem Reporting	Global Edge incorporates an errata problem reporting system to record design and manufacturing problems as they occur to ensure they receive proper attention and meet the requirements for ISO 900x certification.
Professional Billing / Project Accounting	Global Edge includes a full functioned Professional Billing / Project Accounting system that makes it easy to track project costs and automate the billing of professional services performed. As time and expenses are entered for projects and jobs, this information including complete descriptions of the work performed can be optionally included within an invoice as each item is approved.
Time & Attendance	Global Edge incorporates time and attendance functionality enterprise-wide to record employee hours for payroll, projects and jobs for both billable and non-billable time. Global Edge eliminates the retyping of time and attendance information recorded throughout the enterprise and automatically posts it to billing and payroll.
Customer Service / Technical Support	Global Edge includes the necessary functionality to provide the proper, real-time product and sales information for better customer service and warranty support. As products are designed, manufactured and sold, all of the necessary required information is made available at your finger tips for responsive customer follow-up.
Enterprise Integration	Global Edge integrates engineering with the enterprise to eliminate duplicate information and eliminates the retyping of the same information throughout the enterprise. Global Edge not only makes complete product information available to the people who need it, it uses an accurate engineering bill of materials and routings as a foundation to automatically generate accurate information for quoting, purchasing, manufacturing and accounting.

CAD / ERP Interface



Global Edge® provides a "real-time" dynamic link between CAD, engineering and the enterprise.

Global Edge® – CAD / ERP Interface provides a dynamic, two-way product data link between most major 3D CAD and ERP / Accounting systems. As new products are designed, or existing products are modified, **Global Edge** provides an automated real-time link to synchronize product bill of materials information between CAD drawings and your business system. **Global Edge** eliminates the manual retyping of bill of materials and routing information into the ERP system. As new parts and assemblies are created or modified in engineering, this information is dynamically updated and is made readily available at the enterprise level.

Key Module Features:

- Interface to Most Major CAD Systems
- Dynamic CAD / ERP Link
- Product Configurator Link
- Integrated Document Control
- Electronic Parts Catalog
- Real-Time Part Validation
- Enterprise Integration

Goals / Challenges Addressed:

- Maintain Accurate Bill of Materials From Multiple CAD Systems
- Create Two-Way "Real-Time" Bill of Materials Link between CAD and ERP
- Eliminate Manual Retyping of Engineering Bill of Materials to ERP System
- Provide Engineering with Purchasing Information
- Provide Engineering & Purchasing with On-Line "Where-Used" Functionality
- Integrate CAD Bill of Materials with Enterprise
- Integrate Product Configurator with CAD to Automatically Generate Drawings

CAD / ERP Interface – Return On Investment:

- | | |
|---|--|
| ✓ | Accurate Real-Time Engineering Information Available Enterprise-Wide |
| ✓ | Engineering Documents Instantly Accessible Throughout Enterprise |
| ✓ | CAD Bill of Materials Synchronized Between Engineering and ERP / Business System |
| ✓ | Eliminate Retyping of Bill of Materials / Routings Enterprise-Wide |
| ✓ | Automated Drawing Generation of Simple-to-Complex Products |
| ✓ | Improved Productivity Maintaining Bill of Materials, CAD Drawings / Documents |

Key Features & Benefits (CAD / ERP Interface):

Key Features	Benefits
Interface to Most Major CAD Systems	Global Edge includes a direct interface between most major 3D CAD systems and the Global Edge "Engineering Data Warehouse" that stores an accurate bill of materials foundation that is accessible enterprise-wide.
Dynamic CAD / ERP Link	Global Edge provides a dynamic, two-way link between most major 3D CAD and ERP / Accounting systems. This link synchronizes the engineering bill of materials with the bill of materials in the ERP / Accounting system. This improves information accuracy enterprise-wide by eliminating the retyping of the same information from one department to the next.
Product Configurator Link	Global Edge automates the process of generating simple-to-complex CAD drawings. As product configurations are generated throughout the Global Edge system with Product Configuration Engine, creates the necessary CAD drawing attribute information.
Integrated Document Control	Global Edge integrates CAD with document control to ensure that drawings and documents are properly and securely vaulted to eliminate duplication.
Electronics Part Catalog	Global Edge includes an on-line parts catalog that makes it easy to search the engineering data warehouse for existing parts, assemblies and products based a wide range of search criterias. This eliminates duplicate drawings, part numbers and makes it easy to find right part or assembly.
Real-Time Part Validation	Global Edge provides real-time part validation as new parts are created within a CAD drawing. This functionality helps eliminate duplicate part numbers throughout the enterprise.
Enterprise Integration	Global Edge provides "real-time" information integration between engineering, sales, purchasing, manufacturing and accounting to speed up and simplify the entire workflow process from design to final product shipment. Global Edge eliminates the retyping of the same information from department to department and makes the right information available "on-demand" to people who need it.

Document Control

Currently Checked Out Files	Doc. Num.	Checked Out At.	Checked Out For
H:\doc_dir\FSH-DRW-FP.SLDPRT	1674	11/9/2004 5:00:17 PM	Editing
H:\doc_dir\FSH-DRW-RL-RIGHT.SLDASM	1675	11/9/2004 5:00:17 PM	Editing
H:\doc_dir\FSH-FLUL-OPT.SLDASM	1679	11/9/2004 5:00:17 PM	Editing
H:\doc_dir\FSH-DRW-DB.SLDPRT	1680	11/9/2004 5:00:17 PM	Editing
H:\doc_dir\FSH-DRW-FS.SLDPRT	1681	11/9/2004 5:00:17 PM	Editing
H:\doc_dir\FSH-DRW-RL-LEFT.SLDASM	1682	11/9/2004 5:00:17 PM	Editing
H:\doc_dir\FSH-FST-SCW-#10-0.375.SLDPRT	1683	11/9/2004 5:00:20 PM	Editing
H:\doc_dir\FSH-FST-SCW-#10-0.50.SLDPRT	1684	11/9/2004 5:00:17 PM	Editing
H:\doc_dir\RL-LEFT-FRM.SLDPRT	1689	11/9/2004 5:00:19 PM	Editing
H:\doc_dir\RL-RIGHT-FRM.SLDPRT	1690	11/9/2004 5:00:19 PM	Editing
H:\doc_dir\RL-RLR.SLDPRT	1691	11/9/2004 5:00:19 PM	Editing
H:\doc_dir\FSH-MICROBRAW.SLDASM	1692	11/9/2004 5:00:21 PM	Editing
H:\doc_dir\FSH-HDW-HDL-#50-CH-PL.SLDPRT	1693	11/9/2004 5:00:20 PM	Editing
H:\doc_dir\FSH-HDW-HDL-5.00-CH-PL.SLDPRT	1694	11/9/2004 5:00:20 PM	Editing
H:\doc_dir\FSH-HDW-HDL-6.00-CH-PL.SLDPRT	1695	11/9/2004 5:00:20 PM	Editing
H:\doc_dir\FSH-HDW-HDL-5.00-CH-PL-K.SLDASM	1696	11/9/2004 5:00:19 PM	Editing
H:\doc_dir\FSH-HDW-HDL-#50-CH-PL-K.SLDASM	1697	11/9/2004 5:00:19 PM	Editing
H:\doc_dir\FSH-HDW-HDL-6.00-CH-PL-K.SLDASM	1698	11/9/2004 5:00:19 PM	Editing
H:\doc_dir\LT_REAR_MTG.SLDPRT	1926	11/9/2004 5:00:20 PM	Editing
H:\doc_dir\PLATE_SUSPENSION_MTG.SLDPRT	1927	11/9/2004 5:00:20 PM	Editing
H:\doc_dir\ROLLER.SLDPRT	1928	11/9/2004 5:00:19 PM	Editing
H:\doc_dir\RT_CASE.SLDASM	1929	11/9/2004 5:00:18 PM	Editing
H:\doc_dir\RT_CHANNEL_ASM.SLDASM	1930	11/9/2004 5:00:19 PM	Editing
H:\doc_dir\RT_REAR_MTG.SLDPRT	1931	11/9/2004 5:00:20 PM	Editing
H:\doc_dir\BACK_SCREEN.SLDPRT	1932	11/9/2004 5:00:19 PM	Editing
H:\doc_dir\BUMPER.MBENT	1933	11/9/2004 5:00:19 PM	Editing

Global Edge® provides effective control of documents enterprise-wide to improve efficiency and eliminate duplication.

Global Edge® – Document Control is an enterprise document management system that makes it easy to securely vault and retrieve documents enterprise-wide. **Global Edge** eliminates document search time and duplicated documents by securely vaulting documents as they are checked in.

Global Edge incorporates drag and drop document vaulting that enables you to grab a document from your desktop and securely vault it with the point and click of a mouse. **Global Edge** provides a secure document vault that ensures documents are securely and accurately stored for authorized retrieval. **Global Edge** allows for remote document vaults that are accessible via the internet.

Global Edge links and vaults documents attached to an actual bill of materials structure. This structure provides for virtually unlimited searching capabilities such as by: drawing, customer, vendor, project, job, ECO, work order, etc.

Key Module Features:

- Secure Document Drag & Drop Vaulting
- Advanced Document Searching
- Document “Where-Used”
- Web Accessible
- Document Check-In / Check-Out
- Automated Revision Control & Approval
- Document Links Throughout ERP
- Unlimited Document File Types
- Document Access & Security Control
- Enterprise Integration

Goals / Challenges Addressed:

- Effective Control of Documents Enterprise-Wide
- Easily Locate Documents Based on Extensive Search Criteria
- Eliminate Duplicate Documents
- Link Documents to Parts, BOMs, Customers, Vendors, Projects, Jobs, etc.
- Documents Accessible Where Relevant Throughout ERP System
- Automatic Secure Document Vaulting
- Secure Document Check-In / Check-Out
- Secure Accessibility of Documents via the Internet

Document Control – Return On Investment:

✓	Elimination of Duplicate Documents
✓	Document Search Time Virtually Eliminated
✓	Controlled Document Access
✓	Eliminates Time Spent Recreating Lost Documents
✓	Speeds Up Design & Approval Process
✓	Improved Productivity Due to Readily Accessible Information

Key Features & Benefits (Document Control):

Key Features	Benefits
Secure Document Drag & Drop Vaulting	Global Edge incorporates drag and drop document vaulting that enables you to grab a document from your desktop and securely vault it with the point and click of a mouse. Global Edge provides a secure document vault that ensures documents are securely and accurately stored for authorized retrieval. Global Edge allows for remote document vaults that are accessible via the internet.
Advanced Document Searching	Global Edge provides advanced document search capabilities by utilizing the product bill of materials as a backbone for document storage. Global Edge allows for a virtually unlimited number of search criterias that include: descriptions, part and document numbers, by project, by job, by customer, by vendor, by employee, etc. Global Edge makes it easy to find the information you need and search for what was done with past projects rather than re-inventing the wheel when information is not found.
Document “Where-Used”	Built into Global Edge is a document “Where-Used” function that allows you to easily find the parts, assemblies and products that are associated with a document or vice-versa.
Web Accessible	Global Edge makes vaulted documents throughout the enterprise accessible via the internet.
Document Check-In / Check-Out	Global Edge includes document check-in and check-out functionality that helps eliminate duplication of documents and prevents two people from working on the same document at the same time. Global Edge records a history of who and when documents were checked-in and checked-out.
Automated Revision Control & Approval	Global Edge provides built-in functionality that simplifies the task for appropriate personnel to approve documents on-line.
Document Links Throughout ERP	Global Edge links documents to the associated bill of materials in the Engineering Data Warehouse to provide an advanced method to search for documents throughout the ERP / Accounting system.
Unlimited Document File Types	Global Edge allows for the vaulting and attachment of virtually any document file type to parts, assemblies, routings, projects, engineering changes, jobs, work orders, vendors, customers, invoices, purchase orders, etc.
Document Access & Security Control	Global Edge provides a full security matrix that prevents unauthorized access of documents throughout the enterprise.
Enterprise Integration	Global Edge provides “real-time” information integration between engineering, sales, purchasing, manufacturing and accounting to speed up and simplify the entire workflow process from design to final product shipment. Global Edge eliminates the retyping of the same information from department to department and makes the right information available “on-demand” to people who need it.

CRM (Sales, Service & Quoting)



Global Edge® helps ensure customer responsiveness including accurate and timely sales quotes.

Global Edge® – CRM (Sales, Service & Quoting) is a complete sales, quoting, and customer relationship management system designed to automate the sales and marketing efforts of a manufacturing company.

Global Edge integrates sales directly with engineering which includes a built-in product configuration engine that automates the process of generating simple-to-complex sales quotes by utilizing product rules developed by engineering.

Global Edge drastically reduces the dependence on engineers to help sales personnel to generate sales quotes for simple-to-complex, custom configured products. **Global Edge** provides the necessary tools to effectively manage your sales and marketing efforts from prospecting, to B2B telemarketing, to lead and customer tracking, to sales quoting, to mail management. **Global Edge** allows you to target your efforts based on forecasted and/or historical sales information.

Key Module Features:

- Sales Force / Marketing Automation
- Prospect / Lead / Contact Management
- Advanced Tickler Function
- Automated Quoting / Product Configuration
- Contact / Sales History Look-Up
- Literature Fulfillment / Mailing List Management
- Sales & Marketing Performance Tracking
- Remote Internet Access
- Direct Link to Order Entry / Enterprise

Goals / Challenges Addressed:

- Increase Sales / Reduce Sales Cycle Times
- Integrate Sales with Engineering, Manufacturing, Order Entry & Enterprise
- Generate Accurate & Timely Sales Quotes
- Automate Quoting Process with Product Configurator
- Effectively Track Sales Cycle from Lead Source to Completion
- Effectively Organize & Manage Sales Efforts
- Powerful Sales Performance Tracking & Analysis
- Automate Literature Fulfillment
- System Fully Accessible via Internet or Dial-Up Connections

CRM (Sales, Service & Quoting) – Return On Investment:

- | | |
|---|--------------------------------------|
| ✓ | Increased Sales |
| ✓ | Reduced Cost of Sales |
| ✓ | Simplified / Fast & Accurate Quoting |

Key Features & Benefits (CRM / Sales, Service & Quoting):

Key Features	Benefits
Sales Force / Marketing Automation	Global Edge incorporates the necessary functionality to automate sales and marketing efforts of your company.
Prospect / Lead / Contact Management	Global Edge provides an effective sales force automation tool to ensure proper lead follow-up and tracking. Global Edge provides a complete call history including a tickler call back function to help ensure customers and prospects are contacted when they need to be.
Advanced Tickler Function	Global Edge includes an advanced tickler search function that allows authorized sales personnel to query the sales database using search criteria that ranges from basic prospect profile information to a complete sales and product history.
Automated Quoting / Product Configuration	Global Edge automates the quoting process of generating simple-to-complex sales quotes. Driven by a powerful product configuration engine, Global Edge enables your sales force to easily generate sales quotes using product rules set-up by your engineering department.
Contact / Sales History Look-Up	Global Edge provides a complete sales history look-up that includes a listing of invoices and tabulated sales totals for each customer broken down by month, year, etc.
Literature Fulfillment / Mailing List Management	Global Edge includes literature fulfillment functionality that automates the process of letter mail merge generation and distribution. As literature fulfillment is completed through normal mail distribution or by e-mail, the system posts a history of what was sent and updates the tickler date to when the information should be followed up on by your sales force.
Sales & Marketing Performance Tracking	Global Edge automates your marketing efforts by providing a tool that makes it easy to focus your efforts based on sales history and prospect profile information. Global Edge includes a full range of prospect and customer reports to track, forecast and effectively manage your entire prospect / customer database
Remote Internet Access	Global Edge provides for remote access of the system via the internet while working at home or on the road.
Direct Interface to Order Entry / Enterprise	As a sales quote is accepted by a customer, it can be automatically loaded into an order for immediate processing. Global Edge provides “real-time” information integration between engineering, sales, purchasing, manufacturing and accounting to speed up and simplify the entire workflow process from design to final product shipment. Global Edge eliminates the retyping of the same information from department to department and makes the right information available “on-demand” to people who need it.

Supply Chain Management



Global Edge® simplifies management of your supply chain by having the right information available in a timely fashion.

Global Edge® – Supply Chain Management is a complete supply chain management system that fully integrates purchasing with sales, engineering, manufacturing and accounting to ensure that the proper information is available when purchasing from suppliers. **Global Edge** identifies components for critical path ordering to ensure that on-time customer delivery schedules are met. **Global Edge** streamlines the entire purchasing process by integrating an accurate bill of materials with order entry and inventory to maintain optimum inventory levels.

Key Module Features:

- Supplier / Purchase Order Management
- MRP Purchasing Report
- Automated Request for Quote
- Automated Purchase Order Generation
- Consolidated Purchasing
- Critical Path Ordering
- Supplier Rating / Performance
- Enterprise Integration

Goals / Challenges Addressed:

- Integrate Purchasing with Sales, Engineering, and Manufacturing
- Purchasing Integrated with MRP
- Easily Identify Critical Path Components for Prompt Ordering
- Maintain Optimum Inventory Levels
- Improve Purchasing Accuracy
- Automate Request-For-Quote Process
- Just-in-Time Delivery of Components & Services
- Consolidated Purchasing
- Effectively Track Vendor Performance
- Streamline Supply Chain Process

Supply Chain Management – Return On Investment:

- | | |
|---|--|
| ✓ | Reduced Inventory Levels |
| ✓ | Reduced Prices & Shipping Costs from Consolidated Purchasing |
| ✓ | Simplify / Streamline Purchasing Process |
| ✓ | Reduced Material Costs |
| ✓ | Improved Efficiency Managing Supply Chain |

Key Features & Benefits (Supply Chain Management):

Key Features	Benefits
Supplier / Purchase Order Management	Global Edge includes a full functioned supplier, purchase order management system that simplifies and improves the efficiency of the entire supply chain management process. Global Edge integrates purchasing with engineering, order entry, manufacturing and inventory to help ensure accurate purchasing of materials for timely production.
MRP Purchasing Report	Global Edge generates a real-time Material Requirements Purchasing report that provides a consolidated list of all the components that need to be purchased for all pending and scheduled job orders.
Automated Request for Quote	Global Edge automatically generates an automated vendor request for quote based on current order requirements.
Automated Purchase Order Generation	Global Edge automates the purchasing process by integrating purchase orders with the engineering bill of materials to explode out the purchase quantity for each required component.
Consolidating Purchasing	Global Edge makes it easy to combine multiple orders and filter out purchased components for simplified, consolidated purchasing.
Critical Path Ordering	Global Edge integrates purchasing with order entry and engineering to provide critical path delivery schedules based on production requirements. Global Edge makes sure that critical components arrive just in time to ensure that customer delivery schedules are met.
Supplier Rating / Performance	Global Edge makes it easy to rate the performance of your suppliers based on their past delivery schedules and their product quality rating based on past material defects.
Enterprise Integration	Global Edge provides “real-time” information integration between engineering, sales, purchasing, manufacturing and accounting to speed up and simplify the entire workflow process from design to final product shipment. Global Edge eliminates the retyping of the same information from department to department and makes the right information available “on-demand” to people who need it.

Integrated Manufacturing



Global Edge® keeps an accurate handle of every job in production to help ensure that on-time delivery schedules are met.

Global Edge® – Integrated Manufacturing is a full functioned Shop Floor Control / Manufacturing Execution System. **Global Edge** forges a strong partnership between engineering, purchasing and manufacturing to head off design and manufacturing problems to control costs. Material requirements planning, process planning, procurement, scheduling, material and labor costs, production tracking and quality control issues are all made more manageable with **Global Edge**. Automatic feedback of problem reporting to engineering constitutes a system that supports the requirements for ISO 900x certification.

Global Edge automatically integrates the engineering bill of materials and routings with work orders to help streamline the manufacturing workflow process. Bar coding provides real-time information for every job in production. **Global Edge** provides real-time, accurate job costing that breaks down each project and job by labor and machine time, as well as material and outside vendor process costs.

Key Module Features:

- Job / Work Order Maintenance
- Critical Path / Mtl. Requirements Planning
- Scheduling / Capacity Planning
- Real-Time On-Line Job Status
- Production Reporting / Job Costing
- Inspection & Quality Reporting
- Lot & Serial Tracking & Traceability
- Bar Coding & Scanning
- Machine & Tool Maintenance
- PLC Interface / Paperless Manufacturing
- Enterprise Integration

Goals / Challenges Addressed:

- Accurately Track Job Costs / Labor Performance
- Real-Time Job Status / Production Tracking
- Reduce Product Cycle Times
- Improve Product Quality while Reducing Costs
- Accurately Track WIP Inventory
- Accurate Tracking of Vendor Outsourcing
- Efficiently Communicate Problems / Changes with Engineering
- Integrate Manufacturing with Enterprise
- Simplify Shop Floor Data Collection
- Minimize Scrap & Rework
- Achieve ISO 900x Certification

Integrated Manufacturing – Return On Investment:

- | | |
|---|--|
| ✓ | Reduced WIP Inventory / Production Costs |
| ✓ | Reduced Warranty Returns / Rework |
| ✓ | Improved Manufacturing Productivity |
| ✓ | Increased Production Capacity |
| ✓ | Elimination of Paper on Shop Floor |

Key Features & Benefits (Integrated Manufacturing):

Key Features	Benefits
Job / Work Order Maintenance	Global Edge includes a full functioned work order maintenance system that makes it easy to manage every job in production. Work orders can be broken down into work packs that divide up jobs into the type of work performed such as: cutting operations, vendor outsourcing, assembly, packaging, etc.
Critical Path / Materials Requirements Planning	With tight integration between engineering, sales, purchasing and manufacturing, Global Edge simplifies the process of critical path ordering and material requirements planning. Global Edge ensures that job orders meet their delivery schedules and the right components are on hand when required.
Scheduling / Capacity Planning	Global Edge provides all of the necessary functionality for rough and detailed scheduling to maximize the capacity of your production and ensure on-time delivery schedules.
Real-Time On-Line Job Status	Global Edge provides an on-line job status function that displays the real-time job status of all work orders in production.
Production Reporting / Job Costing	Global Edge includes a full range of reporting options that make it easy to track jobs in production from scheduling to final product shipment.
Inspection & Quality Reporting	Global Edge includes the necessary functionality to record the inspection results of materials as they are received from the vendor. Recorded inspection information is used to disposition material and provide an accurate supplier rating for each vendor.
Lot & Serial Tracking & Traceability	Global Edge incorporates lot and serial number tracking and traceability to provide a complete device history of each product and assembly.
Bar Coding & Scanning	Global Edge includes bar code label printing and bar code label scanning throughout the Global Edge system for real-time enterprise reporting.
Machine & Tool Maintenance	Global Edge includes a complete machine and tool maintenance management system that makes it easy to track your fixed assets including the capacity and environmental profile information for each machine and tool.
PLC Interface / Paperless Manufacturing	Global Edge provides a direct interface to most PLCs on the factory shop floor to create a paperless manufacturing environment. The built in Product Configuration Engine makes it possible to process complex engineering orders in a matter of seconds and automatically route them to production.
Engineering / Manufacturing Integration	Global Edge includes tight integration and collaboration between engineering and manufacturing to reduce costly design and manufacturing errors.
Engineering Integration	Global Edge provides “real-time” information integration between engineering, sales, purchasing, manufacturing and accounting to speed up and simplify the entire workflow process from design to final product shipment. Global Edge eliminates the retyping of the same information from department to department and makes the right information available “on-demand” to people who need it.

Integrated Financials



Global Edge® provides a single point of data entry to ensure accurate information is available when and where needed.

Global Edge® – Integrated Financials is a fully integrated accounting system to manage the financial portion of your business. **Global Edge** integrates all aspects of the enterprise with your finance department from sales, to engineering, to purchasing and manufacturing. **Global Edge** focuses on keeping data entry requirements to a minimum by providing a single point of data entry. Once information is entered into system, it can be moved electronically throughout the enterprise without double keying of data.

Key Module Features:

- Order Entry / Billing
- Accounts Receivable
- Accounts Payable / Purchase Order
- Inventory Control
- Shipping & Receiving
- General Ledger / Bank Account
- Fixed Assets Management
- Payroll Time & Attendance
- Enterprise Integration

Goals / Challenges Addressed:

- Accounting Integrated with Sales, Engineering, Purchasing & Manufacturing
- Integrate Sales & Quoting with Order Entry
- Integrate Order Entry with Project Management, Shop Floor & Accounts Receivable
- Integrate Project Management & Shop Floor with Inventory & Purchasing
- Integrate Purchasing, Project Management & Shop Floor with Accounts Payable
- Integrate Payroll Time & Attendance with Project Management, Shop Floor, Etc.
- Integrate Enterprise with General Ledger
- Reduce Data Entry & Eliminate Re-Typing of Information
- Consolidated, Real-Time Enterprise Financial Reporting

Integrated Financials – Return On Investment:

- | | |
|---|---|
| ✓ | Increase Profitability |
| ✓ | Reduced Expenses |
| ✓ | Improved Cashflow |
| ✓ | Improved Enterprise Productivity |

Key Features & Benefits (Integrated Financials):

Key Features	Benefits
Order Entry / Billing	Global Edge includes a powerful order entry and billing system that integrates directly with quoting, engineering and manufacturing. As orders are generated, Global Edge can be set-up to automatically create projects and/or jobs. The order entry functionality incorporates the Product Configuration Engine that automates process of configuring simple-to-complex orders ready for engineering and/or manufacturing.
Accounts Receivable	Global Edge includes a full functioned accounts receivable system that integrates directly with billing to efficiently manage your collection process. All AR transactions are posted to General Ledger for up-to-date financial summaries.
Accounts Payable / Purchase Order	Global Edge includes a full functioned vendor management system to manage your payables and purchase orders. Global Edge includes a direct interface with sales, engineering and manufacturing to consolidate the necessary real-time information needed for timely and consolidated purchasing. Accounts Payable also integrates directly with Receiving and General Ledger to produce up-to-date, real-time information summaries.
Inventory Control	Global Edge simplifies inventory control by using an accurate bill of materials foundation to backflush inventory as products are manufactured. The Engineering Data Warehouse helps eliminates duplicate part numbers to improve inventory accuracy. Global Edge improves the accuracy of entire purchasing process to maintain proper inventory levels.
Shipping & Receiving	Global Edge provides real-time shipping and receiving functionality that is integrated with Accounts Receivable, Accounts Payable, Inventory Control to expedite the process of invoicing customer orders quickly, recording purchasing transactions and maintaining accurate inventory levels.
General Ledger / Bank Account	Global Edge includes General Ledger / Bank Account functionality that integrates and pulls together general ledger transactions from the entire enterprise to provide real-time control of your company's finances.
Fixed Assets Management	Global Edge provides functionality to manage your fixed assets throughout the company. Global Edge allows you to easily track and maintain depreciation transactions that are automatically fed to general ledger for real-time tracking of your fixed assets.
Payroll Time & Attendance	Global Edge includes a full functioned payroll time and attendance system that integrates and eliminates the retyping of employee time and expenses that are accrued throughout the enterprise. Global Edge provides all of the necessary functionality for check printing and government reporting at the city, county, state and national levels.
Enterprise Integration	Global Edge includes a fully integrated set of financial modules that offers a single point of data entry. Global Edge speeds up the entire financial workflow process which allows quick closure of each financial period and provides a real-time financial snapshot of your company.