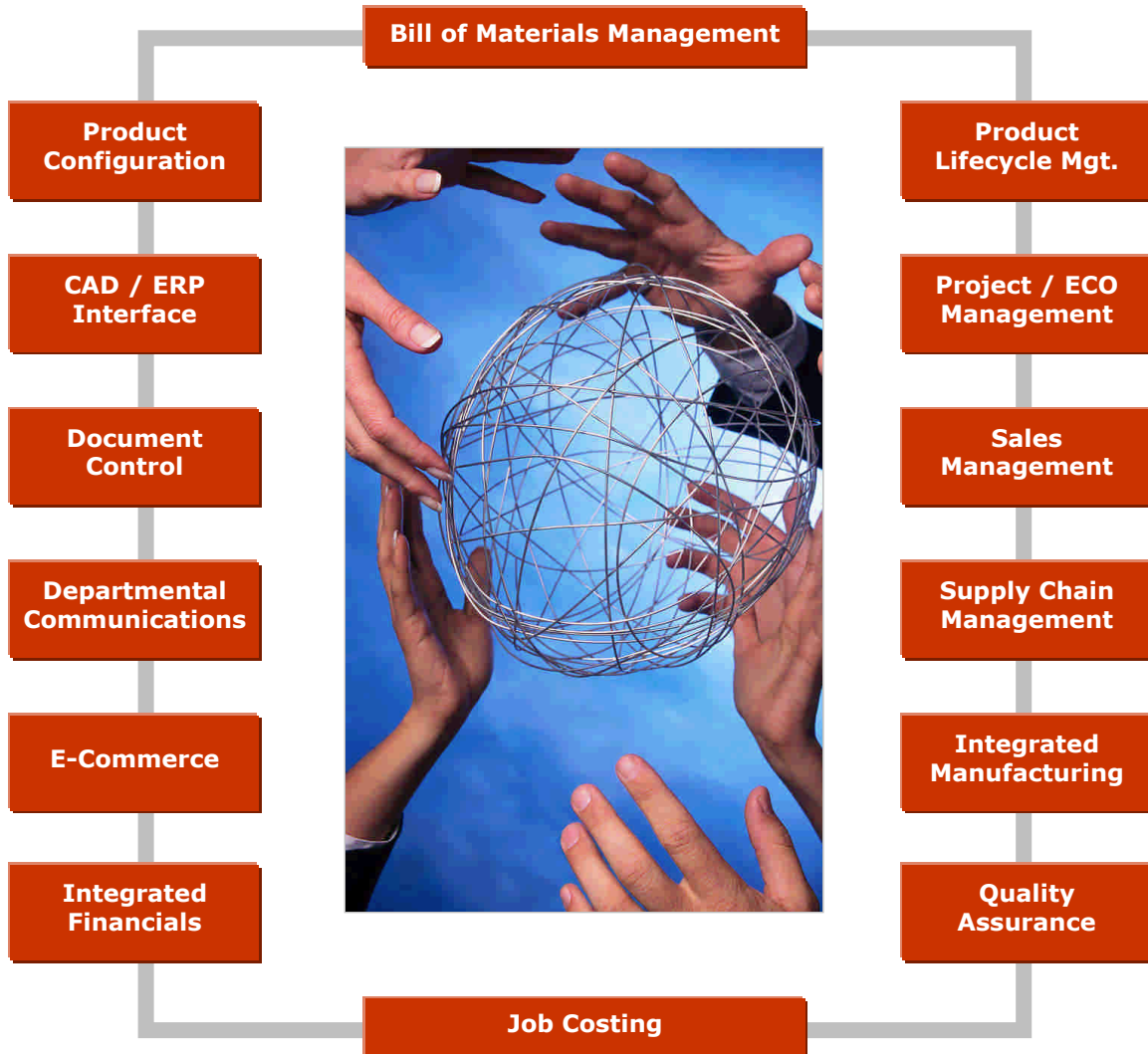


Global Edge[®] 11.0 – Enterprise Edition

The Power to Succeed in a Global Market



Taking Productivity to the Next Level

Global Edge[®] is a Registered Trademark of Logic Design Corporation.

Copyright © 2008 Logic Design Corporation – All Rights Reserved – Version 11.0

LOGIC DESIGN
corporation

161 West Wisconsin Avenue, Suite 2E • Pewaukee, WI 53072-3468
Phone: 262-695-1300 • Fax: 262-695-1313 • Web Site: www.lcdglobal.com

Global Edge® 11.0 – Enterprise Edition

Global Edge® 11.0 – Enterprise Edition is an affordable, off-the-shelf, modular, fully-integrated ERP / Accounting system designed for Small-to-Medium sized manufacturing companies. **Global Edge** provides an innovative method to increase productivity, improve information accuracy, effectively communicate and collaborate between departments. **Global Edge** starts with engineering and the design of the product by integrating CAD and “real-time” product information with ERP for easy collaboration with sales, purchasing, manufacturing and accounting. **Global Edge** is driven by a powerful product configuration engine that automates the task of configuring simple-to-complex bill of materials and routings, producing fast accurate sales quotes and cost roll-ups, and the automated generation of simple-to-complex CAD drawings. **Global Edge** simplifies and speeds up the entire workflow process from design, quoting, purchasing and manufacturing to final product shipment.

Global Edge creates a “paperless” manufacturing environment that eliminates duplication of effort by eliminating the manual retyping of the same information from department to department. As new products are designed, or existing products redesigned, **Global Edge** makes the right information available to the right people when they need it. **Global Edge** allows engineers to engineer rather than spending time doing data entry. **Global Edge** integrates bill of materials and project management with enterprise document control to simplify the retrieval of necessary information. **Global Edge** helps improve the inefficiencies of searching for drawings, documents, existing designs and parts numbers while eliminating duplicate information throughout the enterprise. **Global Edge** drastically reduces the product cycle times by making it easy to find existing product information and not having to spend time reinventing the wheel.

Global Edge helps companies coordinate and streamline their operations to effectively compete in both strong and weak economic times. **Global Edge** combines the capabilities of PDM, PLM, ERP, SCM, MES and CRM systems into an integrated solution that provides real-time information throughout the enterprise. **Global Edge** can standalone or integrates with most ERP / Legacy systems.



Global Edge® simplifies the entire workflow process and makes it easy to effectively collaborate enterprise-wide.

Standalone / Fully-Integrated Modules:

- Bill of Materials / Product Configuration
- Engineering / Project Management
- CAD / ERP Interface
- Document Control
- CRM (Sales, Service & Quoting)
- Supply Chain Management
- Integrated Manufacturing
- Integrated Financials

Goals / Challenges Addressed:

- Respond Quickly to Market Changes
- Provides Agile Manufacturing
- Effectively Manage Entire Product Lifecycle
- Reduce Product Cycle Times
- Faster Time-to-Market
- Increase Productivity
- Automate / Eliminate Repetitive Manual Workflow Tasks
- Improve Product Quality / Reduce Costs
- Eliminate Duplication of Effort / Information
- Improve Information Accuracy
- Fully Integrated Information System to Streamline Operations
- Effective Collaboration & Communications Throughout Enterprise

Global Edge – Return On Investment:

| | |
|---|--|
| ✓ Helps Reduce Product Cycle Times | ✓ Automates Time Consuming Workflow Tasks |
| ✓ Helps Increase Productivity | ✓ Helps Streamline Operations / Reduce Costs |
| ✓ Eliminates Duplication of Information / Effort | ✓ Provides Better Enterprise Communications |
| ✓ Helps Improve Information Accuracy | ✓ Real-Time Product Information Enterprise-Wide |

Copyright © 2008 Logic Design Corporation – All Rights Reserved – Version 11.0

Global Edge® – Fully Integrated Modules

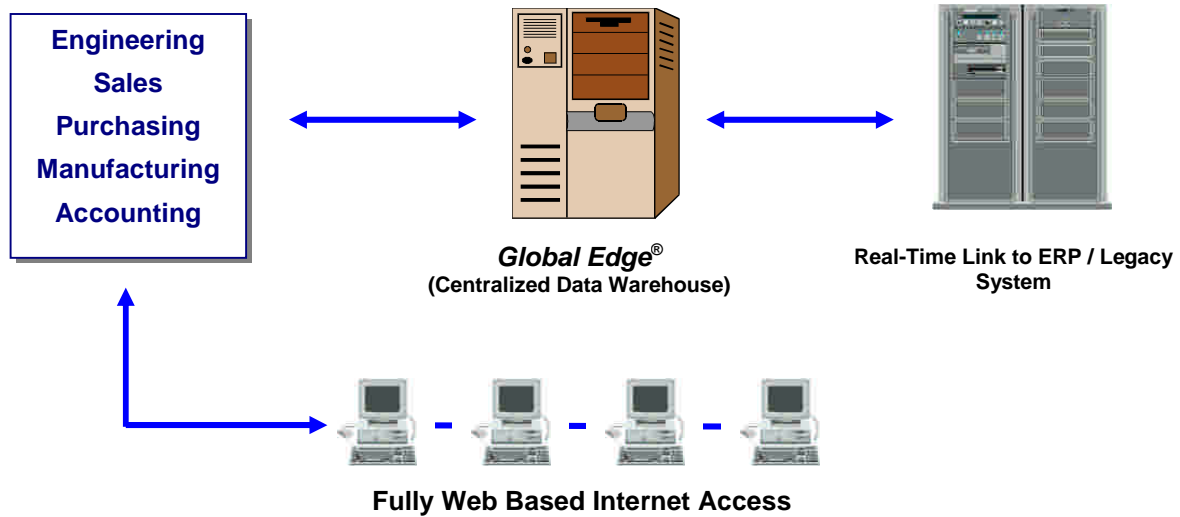
Global Edge includes the following modules that can either standalone or operate as a fully-integrated information workflow system:

| | | |
|---|--|---|
| BOM / Product Configuration <ul style="list-style-type: none">• Bill of Materials Management• Powerful “Where-Used”• Direct Interface to CAD / ERP• Automated Product Configuration• Automated BOM / Routings / Cost Roll-Ups• Automated Drawing Generation• Automated Link to Production• Electronic Cut Lists• Integrated Document Control• Enterprise Integration | Engineering / Project Management <ul style="list-style-type: none">• Engineering Data Warehouse• Engineering / PDM Workflow• Design & Document Approval• Version & Release Control• Project / ECO Management• Errata Problem Reporting• Professional Billing / Project Accounting• Time & Attendance• Customer Service / Technical Support• Enterprise Integration | CAD / ERP Interface <ul style="list-style-type: none">• Interface to Most Major CAD Systems• Dynamic CAD / ERP Link• Product Configurator Link• Integrated Document Control• Electronic Parts Catalog• Real-Time Part Validation• Enterprise Integration |
| Integrated Financials <ul style="list-style-type: none">• Order Entry / Billing• Accounts Receivable• Accounts Payable / Purchase Order• Inventory Control• Shipping & Receiving• General Ledger / Bank Account• Fixed Assets Management• Payroll Time & Attendance• Enterprise Integration | The Power to Succeed | Document Control <ul style="list-style-type: none">• Secure Document Drag & Drop Vaulting• Advanced Document Searching• Document “Where-Used”• Web Accessible• Document Check-In / Check-Out• Automated Revision Control & Approval• Document Links Throughout ERP• Unlimited Document File Types• Document Access & Security Control• Enterprise Integration |
| Integrated Manufacturing <ul style="list-style-type: none">• Job / Work Order Maintenance• Critical Path / Material Requirements Planning• Scheduling / Capacity Planning• Real-Time On-Line Job Status• Production Reporting / Job Costing• Inspection & Quality Reporting• Lot & Serial Tracking & Traceability• Bar Coding & Scanning• Machine & Tool Maintenance• PLC Interface / Paperless Mfg.• Enterprise Integration | Supply Chain Management <ul style="list-style-type: none">• Supplier / Purchase Order Management• MRP Purchasing Report• Automated Request for Quote• Automated Purchase Order Generation• Consolidated Purchasing• Critical Path Ordering• Supplier Rating / Performance• Enterprise Integration | CRM (Sales, Service & Quoting) <ul style="list-style-type: none">• Sales Force / Marketing Automation• Prospect / Lead / Contact Mgt.• Advanced Tickler Function• Automated Quoting / Product Configuration• Contact / Sales History Look-Up• Literature Fulfillment / Mailing List Management• Sales & Mkt. Performance Tracking• Remote Internet Access• Direct Link to Order Entry• Enterprise Integration |

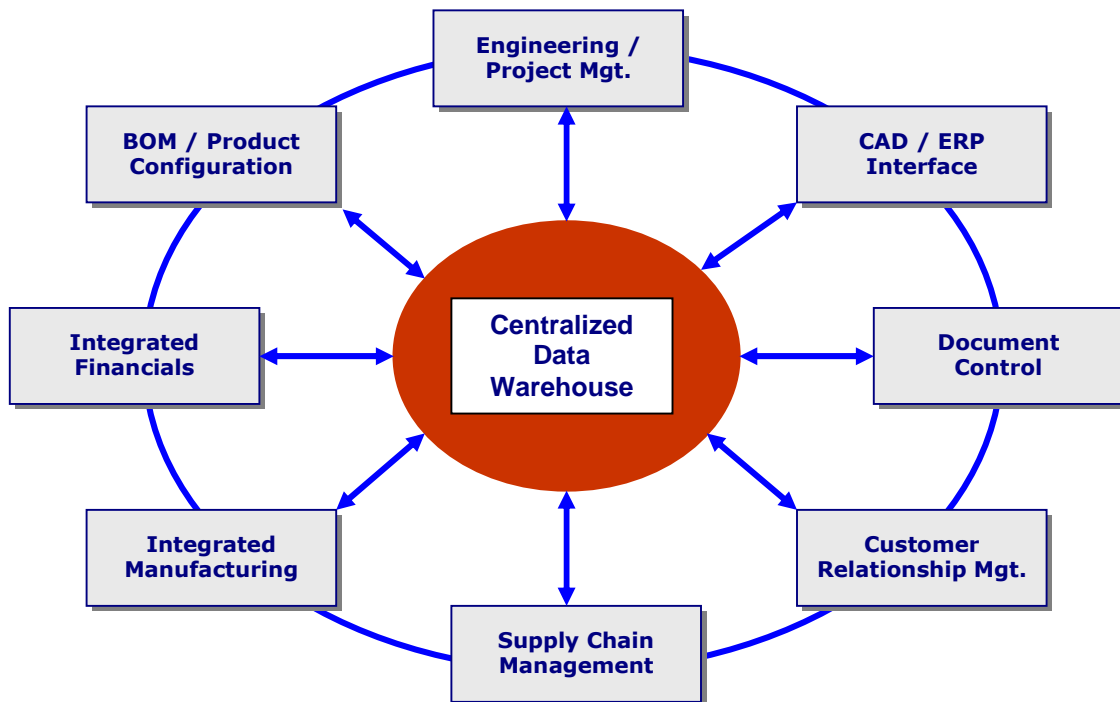
Global Edge® Provides the Functionality to Help Your Company Succeed in a Competitive Global Market

Copyright © 2008 Logic Design Corporation – All Rights Reserved – Version 11.0

Global Edge® – Enterprise Workflow Diagram

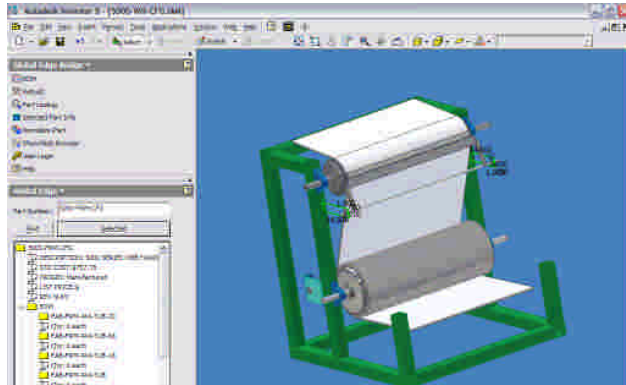


Global Edge® Helps Ensure Everyone is on the Same Page



Global Edge® Provides “Real-Time” Product Data Enterprise-Wide

Bill of Materials / Product Configuration



Global Edge® helps increase productivity and improves information accuracy by automating the bill of materials process.

Global Edge® – Bill of Materials / Product Configuration is a full-functioned bill of materials management system designed to manage parts, assemblies, products and routings from initial design to final product shipment. Driven by a powerful product configuration engine, **Global Edge** automates the task of creating simple-to-complex, multi-level product assemblies including routings and cost roll-ups. With a direct interface to most major 3D CAD and ERP systems, **Global Edge** produces an accurate bill of materials that is stored in a “real-time” engineering data warehouse to which sales, purchasing, manufacturing and accounting have easy access.

Global Edge allows engineering to easily develop product configuration rules that your sales department can then use to independently generate simple-to-complex sales quotes incorporating material and labor costs fed by accounting. **Global Edge** offers “soft coded” product rules that provide the intelligence of how your products are designed and manufactured. **Global Edge** eliminates invalid product configurations and is easy enough to use by your order entry staff. Information generated can be fed to 3D CAD for automatic drawing generation and/or electronic cut lists sent directly to machines on the shop floor for production.

Key Module Features:

- Bill of Materials Management
- Powerful “Where-Used”
- Direct Interface to CAD / ERP
- Automated Product Configuration
- Automated BOM / Routings / Cost Roll-Ups
- Automated Drawing Generation
- Automated Link to Production
- Electronic Cut Lists
- Integrated Document Control
- Enterprise Integration

Goals / Challenges Addressed:

- Reduce Engineering Design Cycle Times
- Automate Configuration of Simple-to-Complex Products
- Generate Accurate Bill of Materials / Routings
- Integrate Bill of Materials with Document Control
- Easily Find Existing Parts & Documents
- Eliminate Duplicate Part Numbers / Orphan Parts
- Centralize & Consolidate Multiple Bill of Materials Databases
- Increase Design Reuse

Bill of Materials / Product Configuration – Return On Investment:

- | | |
|---|---|
| ✓ | Generate Simple-to-Complex Product Configurations in Seconds |
| ✓ | Eliminates Duplication of Information / Effort |
| ✓ | Improved Information Accuracy / Less Rework |
| ✓ | Engineering Product Data Shared Real-Time Electronically Enterprise-Wide |

Engineering / Project Management



Global Edge® improves the engineering workflow process by making projects and orders easier to manage and expedite.

Global Edge® – Engineering / Project Management is a full functioned engineering product data management workflow system designed to improve the efficiency and productivity of an engineering department. **Global Edge** helps forge a strong partnership between engineering, manufacturing, sales, purchasing and accounting to provide accurate, real-time information for every project and job in production.

Global Edge eliminates retyping the same information from department to department to help maintain accuracy and eliminate duplication of effort. **Global Edge** speeds time-to-market by providing the right information to right people when they need it. **Global Edge** includes a full functioned project / engineering change order management system that makes it easy to track project time, revision and engineering changes. **Global Edge** includes full functioned project accounting and professional billing for services rendered.

Key Module Features:

- Engineering Data Warehouse
- Engineering / PDM Workflow
- Design & Document Approval
- Version & Release Control
- Project / ECO Management
- Errata Problem Reporting
- Professional Billing / Project Accounting
- Time & Attendance
- Customer Service / Technical Support
- Enterprise Integration

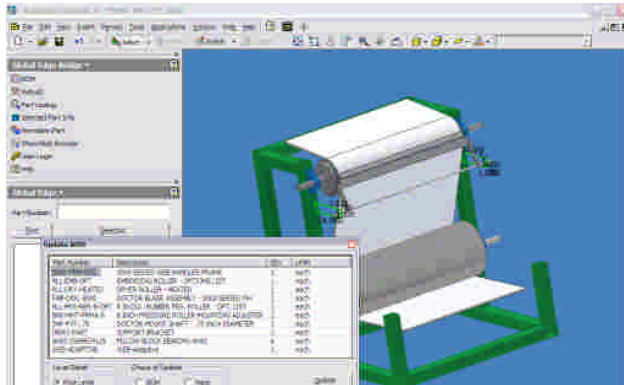
Goals / Challenges Addressed:

- Reduce Engineering Cycle Times
- Provide Better Customer Service
- Easy Retrieval of Past Project Histories
- Streamline Project / ECO Workflow Process
- Establish On-Line Engineering Knowledge Database
- Better Planning / Allocation of Project Resources
- Speed-Up Design & ECO Approval Process
- Accurate Version & Release Control
- Accurate Tracking of Project Time & Expenses
- Integrate Engineering with Enterprise
- Achieve ISO 900x Certification

Engineering / Project Management – Return On Investment:

- | | |
|---|---|
| ✓ | Reduced Engineering / Project Costs |
| ✓ | Less Rework |
| ✓ | Improved Product Quality |
| ✓ | Shortened Engineering Cycle Times |
| ✓ | Efficient Distribution of Engineering Information to Enterprise |
| ✓ | Real-Time Project Status Reporting |
| ✓ | Improved Engineering Productivity |

CAD / ERP Interface



Global Edge® provides a “real-time” dynamic link between CAD, engineering and the enterprise.

Global Edge® – CAD / ERP Interface provides a dynamic, two-way product data link between most major 3D CAD and ERP / Accounting systems. As new products are designed, or existing products are modified, **Global Edge** provides an automated real-time link to synchronize product bill of materials information between CAD drawings and your business system. **Global Edge** eliminates the manual retyping of bill of materials and routing information into the ERP system. As new parts and assemblies are created or modified in engineering, this information is dynamically updated and is made readily available at the enterprise level.

Key Module Features:

- Interface to Most Major CAD Systems
- Dynamic CAD / ERP Link
- Product Configurator Link
- Integrated Document Control
- Electronic Parts Catalog
- Real-Time Part Validation
- Enterprise Integration

Goals / Challenges Addressed:

- Maintain Accurate Bill of Materials From Multiple CAD Systems
- Create Two-Way “Real-Time” Bill of Materials Link between CAD and ERP
- Eliminate Manual Retyping of Engineering Bill of Materials to ERP System
- Provide Engineering with Purchasing Information
- Provide Engineering & Purchasing with On-Line “Where-Used” Functionality
- Integrate CAD Bill of Materials with Enterprise
- Integrate Product Configurator with CAD to Automatically Generate Drawings

CAD / ERP Interface – Return On Investment:

- | | |
|---|--|
| ✓ | Accurate Real-Time Engineering Information Available Enterprise-Wide |
| ✓ | Engineering Documents Instantly Accessible Throughout Enterprise |
| ✓ | CAD Bill of Materials Synchronized Between Engineering and ERP / Business System |
| ✓ | Eliminate Retyping of Bill of Materials / Routings Enterprise-Wide |
| ✓ | Automated Drawing Generation of Simple-to-Complex Products |
| ✓ | Improved Productivity Maintaining Bill of Materials, CAD Drawings / Documents |

Document Control

| Currently Checked Out Files | Doc. Num. | Checked Out At. | Checked Out For |
|--|-----------|----------------------|-----------------|
| H:\doc_dir\FSH-DRW-FP.SLDPRT | 1674 | 11/9/2004 5:00:17 PM | Editing |
| H:\doc_dir\FSH-DRW-RL-RIGHT.SLDASM | 1675 | 11/9/2004 5:00:17 PM | Editing |
| H:\doc_dir\FSH-FLUL-OPT.SLDASM | 1679 | 11/9/2004 5:00:17 PM | Editing |
| H:\doc_dir\FSH-DRW-DB.SLDPRT | 1680 | 11/9/2004 5:00:17 PM | Editing |
| H:\doc_dir\FSH-DRW-FS.SLDPRT | 1681 | 11/9/2004 5:00:17 PM | Editing |
| H:\doc_dir\FSH-DRW-RL-LEFT.SLDASM | 1682 | 11/9/2004 5:00:17 PM | Editing |
| H:\doc_dir\FSH-FST-SCW-#10-0.375.SLDPRT | 1683 | 11/9/2004 5:00:20 PM | Editing |
| H:\doc_dir\FSH-FST-SCW-#10-0.50.SLDPRT | 1684 | 11/9/2004 5:00:17 PM | Editing |
| H:\doc_dir\RL-LEFT-FRM.SLDPRT | 1689 | 11/9/2004 5:00:19 PM | Editing |
| H:\doc_dir\RL-RIGHT-FRM.SLDPRT | 1690 | 11/9/2004 5:00:19 PM | Editing |
| H:\doc_dir\RL-RLR.SLDPRT | 1691 | 11/9/2004 5:00:19 PM | Editing |
| H:\doc_dir\FSH-MICROW.SLDASM | 1692 | 11/9/2004 5:00:21 PM | Editing |
| H:\doc_dir\FSH-HDW-HDL-#50-CH-PL.SLDPRT | 1693 | 11/9/2004 5:00:20 PM | Editing |
| H:\doc_dir\FSH-HDW-HDL-5.00-CH-PL.SLDPRT | 1694 | 11/9/2004 5:00:20 PM | Editing |
| H:\doc_dir\FSH-HDW-HDL-6.00-CH-PL.SLDPRT | 1695 | 11/9/2004 5:00:20 PM | Editing |
| H:\doc_dir\FSH-HDW-HDL-5.00-CH-PL-K.SLDASM | 1696 | 11/9/2004 5:00:19 PM | Editing |
| H:\doc_dir\FSH-HDW-HDL-#50-CH-PL-K.SLDASM | 1697 | 11/9/2004 5:00:19 PM | Editing |
| H:\doc_dir\FSH-HDW-HDL-6.00-CH-PL-K.SLDASM | 1698 | 11/9/2004 5:00:19 PM | Editing |
| H:\doc_dir\LT_REAR_MTG.SLDPRT | 1926 | 11/9/2004 5:00:20 PM | Editing |
| H:\doc_dir\PLATE_SUSPENSION_MTG.SLDPRT | 1927 | 11/9/2004 5:00:20 PM | Editing |
| H:\doc_dir\ROLLER.SLDPRT | 1928 | 11/9/2004 5:00:19 PM | Editing |
| H:\doc_dir\RT_CASE.SLDASM | 1929 | 11/9/2004 5:00:18 PM | Editing |
| H:\doc_dir\RT_CHANNEL_ASM.SLDASM | 1930 | 11/9/2004 5:00:19 PM | Editing |
| H:\doc_dir\RT_REAR_MTG.SLDPRT | 1931 | 11/9/2004 5:00:20 PM | Editing |
| H:\doc_dir\BACK_SCREEN.SLDPRT | 1932 | 11/9/2004 5:00:19 PM | Editing |
| H:\doc_dir\BUMPER.MBT | 1933 | 11/9/2004 5:00:19 PM | Editing |

Global Edge® provides effective control of documents enterprise-wide to improve efficiency and eliminate duplication.

Global Edge® – Document Control is an enterprise document management system that makes it easy to securely vault and retrieve documents enterprise-wide. **Global Edge** eliminates document search time and duplicated documents by securely vaulting documents as they are checked in.

Global Edge incorporates drag and drop document vaulting that enables you to grab a document from your desktop and securely vault it with the point and click of a mouse. **Global Edge** provides a secure document vault that ensures documents are securely and accurately stored for authorized retrieval. **Global Edge** allows for remote document vaults that are accessible via the internet.

Global Edge links and vaults documents attached to an actual bill of materials structure. This structure provides for virtually unlimited searching capabilities such as by: drawing, customer, vendor, project, job, ECO, work order, etc.

Key Module Features:

- Secure Document Drag & Drop Vaulting
- Advanced Document Searching
- Document “Where-Used”
- Web Accessible
- Document Check-In / Check-Out
- Automated Revision Control & Approval
- Document Links Throughout ERP
- Unlimited Document File Types
- Document Access & Security Control
- Enterprise Integration

Goals / Challenges Addressed:

- Effective Control of Documents Enterprise-Wide
- Easily Locate Documents Based on Extensive Search Criteria
- Eliminate Duplicate Documents
- Link Documents to Parts, BOMs, Customers, Vendors, Projects, Jobs, etc.
- Documents Accessible Where Relevant Throughout ERP System
- Automatic Secure Document Vaulting
- Secure Document Check-In / Check-Out
- Secure Accessibility of Documents via the Internet

Document Control – Return On Investment:

| | |
|---|---|
| ✓ | Elimination of Duplicate Documents |
| ✓ | Document Search Time Virtually Eliminated |
| ✓ | Controlled Document Access |
| ✓ | Eliminates Time Spent Recreating Lost Documents |
| ✓ | Speeds Up Design & Approval Process |
| ✓ | Improved Productivity Due to Readily Accessible Information |

CRM (Sales, Service & Quoting)



Global Edge® helps ensure customer responsiveness including accurate and timely sales quotes.

Global Edge® – CRM (Sales, Service & Quoting) is a complete sales, quoting, and customer relationship management system designed to automate the sales and marketing efforts of a manufacturing company.

Global Edge integrates sales directly with engineering which includes a built-in product configuration engine that automates the process of generating simple-to-complex sales quotes by utilizing product rules developed by engineering.

Global Edge drastically reduces the dependence on engineers to help sales personnel to generate sales quotes for simple-to-complex, custom configured products. **Global Edge** provides the necessary tools to effectively manage your sales and marketing efforts from prospecting, to B2B telemarketing, to lead and customer tracking, to sales quoting, to mail management. **Global Edge** allows you to target your efforts based on forecasted and/or historical sales information.

Key Module Features:

- Sales Force / Marketing Automation
- Prospect / Lead / Contact Management
- Advanced Tickler Function
- Automated Quoting / Product Configuration
- Contact / Sales History Look-Up
- Literature Fulfillment / Mailing List Management
- Sales & Marketing Performance Tracking
- Remote Internet Access
- Direct Link to Order Entry / Enterprise

Goals / Challenges Addressed:

- Increase Sales / Reduce Sales Cycle Times
- Integrate Sales with Engineering, Manufacturing, Order Entry & Enterprise
- Generate Accurate & Timely Sales Quotes
- Automate Quoting Process with Product Configurator
- Effectively Track Sales Cycle from Lead Source to Completion
- Effectively Organize & Manage Sales Efforts
- Powerful Sales Performance Tracking & Analysis
- Automate Literature Fulfillment
- System Fully Accessible via Internet or Dial-Up Connections

CRM (Sales, Service & Quoting) – Return On Investment:

- | | |
|---|--------------------------------------|
| ✓ | Increased Sales |
| ✓ | Reduced Cost of Sales |
| ✓ | Simplified / Fast & Accurate Quoting |

Supply Chain Management



Global Edge® simplifies management of your supply chain by having the right information available in a timely fashion.

Global Edge® – Supply Chain Management is a complete supply chain management system that fully integrates purchasing with sales, engineering, manufacturing and accounting to ensure that the proper information is available when purchasing from suppliers. **Global Edge** identifies components for critical path ordering to ensure that on-time customer delivery schedules are met. **Global Edge** streamlines the entire purchasing process by integrating an accurate bill of materials with order entry and inventory to maintain optimum inventory levels.

Key Module Features:

- Supplier / Purchase Order Management
- MRP Purchasing Report
- Automated Request for Quote
- Automated Purchase Order Generation
- Consolidated Purchasing
- Critical Path Ordering
- Supplier Rating / Performance
- Enterprise Integration

Goals / Challenges Addressed:

- Integrate Purchasing with Sales, Engineering, and Manufacturing
- Purchasing Integrated with MRP
- Easily Identify Critical Path Components for Prompt Ordering
- Maintain Optimum Inventory Levels
- Improve Purchasing Accuracy
- Automate Request-For-Quote Process
- Just-in-Time Delivery of Components & Services
- Consolidated Purchasing
- Effectively Track Vendor Performance
- Streamline Supply Chain Process

Supply Chain Management – Return On Investment:

- | | |
|---|--|
| ✓ | Reduced Inventory Levels |
| ✓ | Reduced Prices & Shipping Costs from Consolidated Purchasing |
| ✓ | Simplify / Streamline Purchasing Process |
| ✓ | Reduced Material Costs |
| ✓ | Improved Efficiency Managing Supply Chain |

Integrated Manufacturing



Global Edge® keeps an accurate handle of every job in production to help ensure that on-time delivery schedules are met.

Global Edge® – Integrated Manufacturing is a full functioned Shop Floor Control / Manufacturing Execution System. **Global Edge** forges a strong partnership between engineering, purchasing and manufacturing to head off design and manufacturing problems to control costs. Material requirements planning, process planning, procurement, scheduling, material and labor costs, production tracking and quality control issues are all made more manageable with **Global Edge**. Automatic feedback of problem reporting to engineering constitutes a system that supports the requirements for ISO 900x certification.

Global Edge automatically integrates the engineering bill of materials and routings with work orders to help streamline the manufacturing workflow process. Bar coding provides real-time information for every job in production. **Global Edge** provides real-time, accurate job costing that breaks down each project and job by labor and machine time, as well as material and outside vendor process costs.

Key Module Features:

- Job / Work Order Maintenance
- Critical Path / Mtl. Requirements Planning
- Scheduling / Capacity Planning
- Real-Time On-Line Job Status
- Production Reporting / Job Costing
- Inspection & Quality Reporting
- Lot & Serial Tracking & Traceability
- Bar Coding & Scanning
- Machine & Tool Maintenance
- PLC Interface / Paperless Manufacturing
- Enterprise Integration

Goals / Challenges Addressed:

- Accurately Track Job Costs / Labor Performance
- Real-Time Job Status / Production Tracking
- Reduce Product Cycle Times
- Improve Product Quality while Reducing Costs
- Accurately Track WIP Inventory
- Accurate Tracking of Vendor Outsourcing
- Efficiently Communicate Problems / Changes with Engineering
- Integrate Manufacturing with Enterprise
- Simplify Shop Floor Data Collection
- Minimize Scrap & Rework
- Achieve ISO 900x Certification

Integrated Manufacturing – Return On Investment:

- | | |
|---|--|
| ✓ | Reduced WIP Inventory / Production Costs |
| ✓ | Reduced Warranty Returns / Rework |
| ✓ | Improved Manufacturing Productivity |
| ✓ | Increased Production Capacity |
| ✓ | Elimination of Paper on Shop Floor |

Integrated Financials



Global Edge® provides a single point of data entry to ensure accurate information is available when and where needed.

Global Edge® – Integrated Financials is a fully integrated accounting system to manage the financial portion of your business. **Global Edge** integrates all aspects of the enterprise with your finance department from sales, to engineering, to purchasing and manufacturing. **Global Edge** focuses on keeping data entry requirements to a minimum by providing a single point of data entry. Once information is entered into system, it can be moved electronically throughout the enterprise without double keying of data.

Key Module Features:

- Order Entry / Billing
- Accounts Receivable
- Accounts Payable / Purchase Order
- Inventory Control
- Shipping & Receiving
- General Ledger / Bank Account
- Fixed Assets Management
- Payroll Time & Attendance
- Enterprise Integration

Goals / Challenges Addressed:

- Accounting Integrated with Sales, Engineering, Purchasing & Manufacturing
- Integrate Sales & Quoting with Order Entry
- Integrate Order Entry with Project Management, Shop Floor & Accounts Receivable
- Integrate Project Management & Shop Floor with Inventory & Purchasing
- Integrate Purchasing, Project Management & Shop Floor with Accounts Payable
- Integrate Payroll Time & Attendance with Project Management, Shop Floor, Etc.
- Integrate Enterprise with General Ledger
- Reduce Data Entry & Eliminate Re-Typing of Information
- Consolidated, Real-Time Enterprise Financial Reporting

Integrated Financials – Return On Investment:

- | | |
|---|---|
| ✓ | Increase Profitability |
| ✓ | Reduced Expenses |
| ✓ | Improved Cashflow |
| ✓ | Improved Enterprise Productivity |